

PCT

WORLD INTELLECTUAL PROPERTY
International Bureau



INTERNATIONAL APPLICATION PUBLISHED UNDER

NO 9608512A1

(51) International Patent Classification 6 : C07K 14/735, 19/00, C12N 15/11, 15/62, C12P 19/34, G01N 33/68, A61K 39/395		A1	(11) International Publication Number: WO 96/08512
			(43) International Publication Date: 21 March 1996 (21.03.96)
(21) International Application Number: PCT/AU95/00606		(74) Agents: WILKIE, Julie, M. et al.; Griffith Hack & Co, 509 St Kilda Road, Melbourne, VIC 3004 (AU).	
(22) International Filing Date: 15 September 1995 (15.09.95)		(81) Designated States: AU, CA, JP, SG, US, European patent (AT, BE, CH, DE, DK, ES, FR, GB, GR, IE, IT, LU, MC, NL, PT, SE).	
(30) Priority Data: PM 8232 16 September 1994 (16.09.94) AU 332,562 31 October 1994 (31.10.94) US		Published With international search report.	
(60) Parent Application or Grant (63) Related by Continuation US 332,562 (CIP) Filed on 31 October 1994 (31.10.94)			
(71) Applicant (for all designated States except US): AUSTIN RESEARCH INSTITUTE CANCER AND ANTI-INFLAMMATORY SYNDICATE NO. 1 [AU/AU]; The Austin Research Institute, Kronheimer Building, Austin Hospital, Studley Road, Heidelberg, VIC 3084 (AU).			
(72) Inventors; and (75) Inventors/Applicants (for US only): HOGARTH, Phillip, Mark [AU/AU]; 23 Stewart Street, Williamstown, VIC 3016 (AU). MCKENZIE, Ian, Farquhar, Campbell [AU/AU]; 359 Brunswick Road, Brunswick, VIC 3056 (AU). BAKER, Ross, Ian [AU/AU]; 16 John Farrant Drive, Gooseberry Hill,			
(54) Title: POLYPEPTIDES WITH Fc BINDING ABILITY			
(57) Abstract <p>The present invention generally relates to molecules having Fc binding ability such as those with Fc receptor-like activity. The present invention also relates to the molecules, nucleic acids encoding the molecules, antagonist compounds, pharmaceutical compositions comprising the molecules and compounds, methods for testing potential antagonists, methods for producing the polypeptides, methods of treatment of disease and other aspects.</p>			

BEST AVAILABLE COPY

FOR THE PURPOSES OF INFORMATION ONLY

Codes used to identify States party to the PCT on the front pages of pamphlets publishing international applications under the PCT.

AT	Austria	GB	United Kingdom	MR	Mauritania
AU	Australia	GE	Georgia	MW	Malawi
BB	Barbados	GN	Guinea	NE	Niger
BE	Belgium	GR	Greece	NL	Netherlands
BF	Burkina Faso	HU	Hungary	NO	Norway
BG	Bulgaria	IE	Ireland	NZ	New Zealand
BJ	Benin	IT	Italy	PL	Poland
BR	Brazil	JP	Japan	PT	Portugal
BY	Belarus	KE	Kenya	RO	Romania
CA	Canada	KG	Kyrgyzstan	RU	Russian Federation
CF	Central African Republic	KP	Democratic People's Republic of Korea	SD	Sudan
CG	Congo	KR	Republic of Korea	SE	Sweden
CH	Switzerland	KZ	Kazakhstan	SI	Slovenia
CI	Côte d'Ivoire	LJ	Liechtenstein	SK	Slovakia
CM	Cameroon	LK	Sri Lanka	SN	Senegal
CN	China	LU	Luxembourg	TD	Chad
CS	Czechoslovakia	LV	Latvia	TG	Togo
CZ	Czech Republic	MC	Monaco	TJ	Tajikistan
DE	Germany	MD	Republic of Moldova	TT	Trinidad and Tobago
DK	Denmark	MG	Madagascar	UA	Ukraine
ES	Spain	ML	Mali	US	United States of America
FI	Finland	MN	Mongolia	UZ	Uzbekistan
FR	France			VN	Viet Nam
GA	Gabon				

POLYPEPTIDES WITH Fc BINDING ABILITY**Field of Invention**

The present invention generally relates to molecules having Fc binding ability such as those with Fc receptor-like activity. The present invention also relates to the molecules, nucleic acids encoding the molecules, antagonist compounds, pharmaceutical compositions comprising the molecules and compounds, methods for testing potential antagonists, methods for producing the polypeptides, methods of treatment of disease and other aspects.

Background of the Invention

Cell surface receptors for the Fc portion of IgG (Fc_R) are expressed on most hematopoietic cells, and through the binding of IgG play a key role in homeostasis of the immune system and host protection against infection. By way of example Fc_RII is a low affinity receptor for IgG that essentially binds only IgG immune complexes and IgA immune complexes and is expressed on a diverse range of cells such as monocytes, macrophages, neutrophils, eosinophils, platelets and B cells (1-3). Fc_RII is involved in a number of immune responses including antibody-dependent cell-mediated cytotoxicity, clearance of immune complexes, release of inflammatory mediators and regulation of antibody production (1-6).

Similarly Fc receptors for other classes of immunoglobulin also occur. For example the Fc receptor for IgE is present on mast cells, basophils and Langerhans cells.

Both the IgG and the IgE Fc receptors contain an extracellular Ig-interactive region which comprises two Ig-like disulphide bonded extracellular domains of the C2 set (7-11). These receptors are structurally conserved in all the Ig-superfamily leukocyte FcR (including Fc_RI, Fc_RIII,

- 2 -

Fc_γRI and Fc_γRI) and presumably represents an Ig-
interactive motif (12-16). In previous studies the
inventors identified the IgG binding region of human Fc_γRII
(17, 18). Chimeric Fc_γRII/Fc_γRI α chain receptors were
5 used to demonstrate that the second extracellular domain of
Fc_γRII was responsible for the binding of IgG, with a
direct binding region located between residues Asn¹⁵⁴ to
Ser¹⁶¹. Molecular modelling of Fc_γRII domain 2 predicted a
structure comprising 7 β strands (A, B, C, C', E, F, G)
10 forming two antiparallel β sheets (containing the ACFG and
BC'E strands respectively), stabilised by a disulphide bond
between strands B and F and a core of hydrophobic residues
(20). The Asn¹⁵⁴ to Ser¹⁶¹ binding region was shown to
encompass an exposed loop region (the F-G loop) at the
15 interface of domains 1 and 2.

In work leading up to the present invention, the
inventors surprisingly discovered that alteration of amino
acid residues in the Fc receptors lead to altered
affinities for immunoglobulin.

20 Summary of the Invention

The invention relates to a polypeptide with Fc
binding ability wherein the polypeptide is altered compared
to a native Fc receptor by addition, deletion or
substitution of one or more amino acids compared to said
25 native Fc receptor.

The invention also relates to a method of testing
compounds for their ability to act as an Fc receptor
antagonist, to the antagonist compounds identified by the
method, to nucleic acid molecules encoding the polypeptides
30 of the invention and to methods of making the nucleic acid
molecules. In addition the invention relates to methods of
detecting immunoglobulin, methods of removing
immunoglobulin, methods of treatment and pharmaceutical
compositions involving the peptides of the invention or
35 their antagonists.

- 3 -

Brief Description of the Figures

- Figure 1. IgG complex binding of chimeric Fc receptors. COS-7 cell monolayers were transfected with chimeric cDNA constructs: D1&D2γ (a), γ109-116ε (b), γ130-135ε (c), or Fc_γRI (d). The binding of IgG immune complexes was assessed directly on the monolayers by EA rosetting using mouse IgG1 sensitised erythrocytes.
- Figure 2. Human IgG1-dimer binding of chimeric Fc receptors. Radiolabelled dimeric human IgG1 was titrated on COS-7 cells transfected with wild-type Fc_γRIIa (■) or chimeric receptor cDNAs; D1&D2γ (□), γ109-116ε (●), γ130-135ε (○). All of the chimeras were expressed on the cell surface as determined by EA rosetting outlined in Figure 1.
- Figure 3. Human IgG1-dimer binding by Fc_γRIIa alanine point mutants. Radiolabelled dimeric human IgG1 was titrated on COS-7 cells transfected with wild-type Fc_γRIIa or Fc_γRIIa containing alanine point mutations, (A) B-C loop mutants, Lys¹¹³-Ala (□), Pro¹¹⁴-Ala (▲), Leu¹¹⁵-Ala (●), Val¹¹⁶-Ala (○), (B) C'-E loop mutants, Phe¹²⁹-Ala (+), Ser¹³⁰-Ala (◇), Arg/His¹³¹-Ala (◆), Leu¹³²-Ala (X), Asp¹³³-Ala (⊞), Pro¹³⁴-Ala (Δ). Comparison of the levels of human IgG1 dimer binding to Fc_γRII mutants relative to wild-type Fc_γRIIa, (C) B-C loop mutants, (D) C'-E loop mutants. The binding of wild-type Fc_γRIIa taken as 100% and mock transfected cells as 0% binding. Results are expressed as + S.E. To control for variable receptor expression between the mutant Fc_γRII COS-7 cell transfectants, levels of expression were determined using a radiolabelled monoclonal anti-Fc_γRII antibody 8.2, and dimer binding normalised to that seen for wild-type Fc_γRII. Typical levels of 8.2 binding in cpm + S.E : WT Fc_γRII 95279; Lys¹¹³-Ala 71660; Val¹¹⁴-Ala 61636; Leu¹¹⁵-Ala 44696; Pro¹¹⁶-Ala; Phe¹²⁹-Ala 74707; Ser¹³⁰-Ala 139802; Arg/His¹³¹-Ala 140475; Leu¹³²-Ala 121096; Asp¹³³-Ala 100149; Pro¹³⁴-Ala 172047.

- 4 -

Figure 4. Molecular model of the extracellular Ig interactive region of Fc_γRII putatively involved in the interaction with IgG1. The position of the loops and G/A strand from domains 1 and 2 are indicated. Examples of amino acids, mutations of which alter Fc receptor function such as Phe¹⁶⁰ and Gly¹³⁶ are also shown.

Figure 5. Oligonucleotides used in SOE-PCR of Example 2.

Figure 6. Histogram showing the effect of mutations on IgE receptor binding immunoglobulin.

Figure 7. Histogram showing a comparison of Fc receptor mutants binding IgG₁ and IgG₂.

Figure 8. Graph showing efficiency with which chimeric receptors bind IgE, εεγ (), γεγ (), CC' (), EF () and GC ().

Figure 9. Photograph of SDS-PAGE showing specificity of the fusion protein, (HSA:FcγRII) for mouse IgG2a (γ2a) IgG2b (γ2b) and HAGG but not for Fab'2 fragments (1302). Shows epitopes present in the fusion protein as detected by four different anti-FcγRII antibodies (8.2, 8.26, IV-3 & 8.7). The fusion protein was radiolabelled with I¹²⁵ and precipitated using Ig or antibodies shown then subjected to SDS-PAGE after reduction.

Figure 10a. Graph showing the clearance of HSA:FcγRII (—□—) and FcγRII (—●—) in the blood.

Figure 10b. Graph showing failure of HSA:FcγRII to accumulate in the urine affinities.

Figure 11. Graph showing the binding affinities of HAGG to HSA:FcγRII-silica (●) and HSA:silica (○). HAGG did not bind HSA:silica.

- 5 -

Figure 12. Nucleotide and predicted amino acid sequence of HSA: Fc_γR_{II} DNA.

Figure 13. Graphs showing results of ELISA studies on the ability of the fusion protein, rsHSA-FcR (—●—) to bind immune complexes. The recombinant receptor rsFcR is denoted by (—■—).

Figure 14a. ELISA studies of serum from a patient with rheumatoid arthritis. Plates were coated with anti-Fc_γR_{II} antibody and then with rec.sFc_γR_{II}.

Figure 14b. Shows results of plates coated with rec.sFc_γR_{II}.

Figure 15. Graph of heat depleted HAGG using Fc_γR_{II}-HSA silica (●). This shows that immune complexes are depleted from liquid by incubation with HSA:Fc_γR_{II} protein silica resin but not by HSA-silica resin (○) no silica is denoted by (■).

Figure 16. Graph showing no depletion of monomeric immunoglobulin using Fc_γR_{II}-HSA silica. This indicates the fusion protein does not bind monomeric Ig.

Figure 17. Titration of rsFc_γR_{II} from various sources. The binding of the recombinant protein from various sources is detected by use of anti-FcR_{II} antibody 8.2 followed by anti-mouse Ig labelled with peroxidase. The sources of the recombinant protein are CHO cells (CHO rs FcR) (—●—), bacteria expressing a fusion protein consisting of the extracellular domains of Fc_γR_{II} fused to maltose binding protein (C2 MBP-rsFcR) (—■—), the extracellular domains of Fc_γR_{II} cleaved from the Fc_γR_{II} maltose binding fusion protein (C2 rs FcR) (—□—). A fusion protein (d2) (—○—) was used as a control. This contains a single FcR domain and has no functional activity.

- 6 -

Figure 18. Graph of inhibition of HRP labelled rsHSA-Fc_γRII by rheumatoid factors and sera. Titration of patients' sera in the HRP-HSA:Fc_γRII ELISA assay. Patients' sera (columns 1-14) was titrated on Hagg coated plates prior to addition of the HRP fusion protein conjugate. Titration of normal serum is also shown (column 15). No inhibition of activity was seen with normal serum but, all sera except column 12 profoundly inhibited Fc receptor binding to Hagg.

10 Figure 19. Names of various peptiods and absorbences thereof in the test for antagonist compounds.

Detailed Description of Preferred Embodiments

The invention relates to a polypeptide with Fc binding ability wherein the polypeptide is altered compared to a native Fc receptor by addition, deletion or substitution of one or more amino acids such that said alteration results in improved characteristics compared to said nature receptor.

20 The term "a polypeptide with Fc binding ability" means a polypeptide or protein comprising natural or synthetic amino acids which has an ability to bind the Fc region of immunoglobulin. The immunoglobulin may be of any class such as IgG, IgE, IgA, IgM or IgD. The immunoglobulin may be derived from any animal such as human, rat, mice, cattle, sheep, goats and other domestic animals, including birds such as chickens, ostriches and emus.

30 The term "altered compared to a native Fc receptor" means that the polypeptide is different to the native Fc receptor. Such difference may include differences in immunoglobulin binding ability, difference in therapeutic ability, amino acid composition or solubility and the like.

35 The term "improved characteristics" means that a desirable characteristic compared to the native Fc receptor

- 7 -

is achieved. This characteristic may enhance or decrease Fc binding ability, cause increased serum half life of the polypeptide for use as a therapeutic or make the polypeptide detectable.

5 In a first embodiment the present invention relates to a polypeptide with Fc binding ability wherein the polypeptide is an Fc receptor-like molecule with an altered ability to bind immunoglobulin wherein said altered ability is brought about by alteration of one or more amino
10 acid residues which affect immunoglobulin binding.

The phrase "Fc receptor-like molecule" means a molecule which is able to bind immunoglobulin to at least some degree. The immunoglobulin may be IgG, IgE, IgA, IgM or IgD. The molecule will usually be a peptide,
15 polypeptide or protein, or made up, at least partially, of amino acids. In its most usual form the molecule will be a peptide composed of a number of amino acid residues linked by peptide bonds. The amino acid components may be natural or synthetic and will be known to those skilled in the art.

20 The phrase "an altered ability to bind immunoglobulin" means that the molecule has an immunoglobulin binding activity different to that of one or more native Fc receptors. This includes the ability of the molecule to bind one form of immunoglobulin compared to
25 another form of immunoglobulin i.e. where the molecule has an altered ability to bind immune complexes, aggregates, dimeric or monomeric immunoglobulin compared to a native Fc receptor. The activity of the molecule may be increased or decreased compared to a native Fc receptor for a given
30 immunoglobulin class.

The phrase "alteration of one or more amino acid residues which affect immunoglobulin binding ability" means that the comparable amino acid residue or region of amino acid residues, implicated in immunoglobulin binding in a
35 native Fc receptor are changed in the Fc receptor-like molecule. The amino acids implicated in immunoglobulin binding may function directly in immunoglobulin binding

- 8 -

or may be involved indirectly such as by maintaining the structural integrity of the receptor so that binding can occur. The change(s) may be the result of insertion, deletion or substitution.

5 The present inventors have determined that amino acid residues or regions of residues in the first and second domains of the Fc_γRII receptor and Fc_γRI receptor function in binding of immunoglobulin. As the extracellular regions of Fc receptors for immunoglobulins
10 are conserved it is expected that similar regions of Fc receptors for other immunoglobulins such as IgA, IgM and IgD will be implicated in immunoglobulin binding and hence be within the ambit of the present invention.

 Preferably the Fc receptor-like molecule is in
15 the form of an isolated preparation meaning it has undergone some purification away from other proteins and/or non-proteinaceous molecules. The purity of the preparation may be represented at least 40% Fc receptor-like molecule, preferably at least 60% Fc receptor-like molecule, more
20 preferably at least 75% Fc receptor-like molecule, even more preferably at least 85% Fc receptor-like molecule and still more preferably at least 95% Fc receptor-like molecule relative to non-Fc receptor-like molecule material as determined by weight, activity, amino acid similarity,
25 antibody reactivity or any other convenient means.

 The Fc receptor-like molecule may be bound to a cell membrane or a support means, or be soluble in form. Where a pharmaceutical use is indicated preferably the molecule is soluble for example as a genetically engineered
30 soluble molecule.

 Soluble Fc receptor-like molecules can be made by methods such as those of Ierino et al J. Exp. Med. (Nov) 1993.

 The molecule may also be labelled with a reporter
35 molecule providing, under suitable conditions, a detectable signal. Such reporter molecules include radio-nucleotides, chemiluminescent molecules, bioluminescent molecules,

- 9 -

fluorescent molecules or enzymes. Commonly used enzymes include horseradish peroxidase, glucose oxidase, β -galactosidase and alkaline phosphatase amongst others.

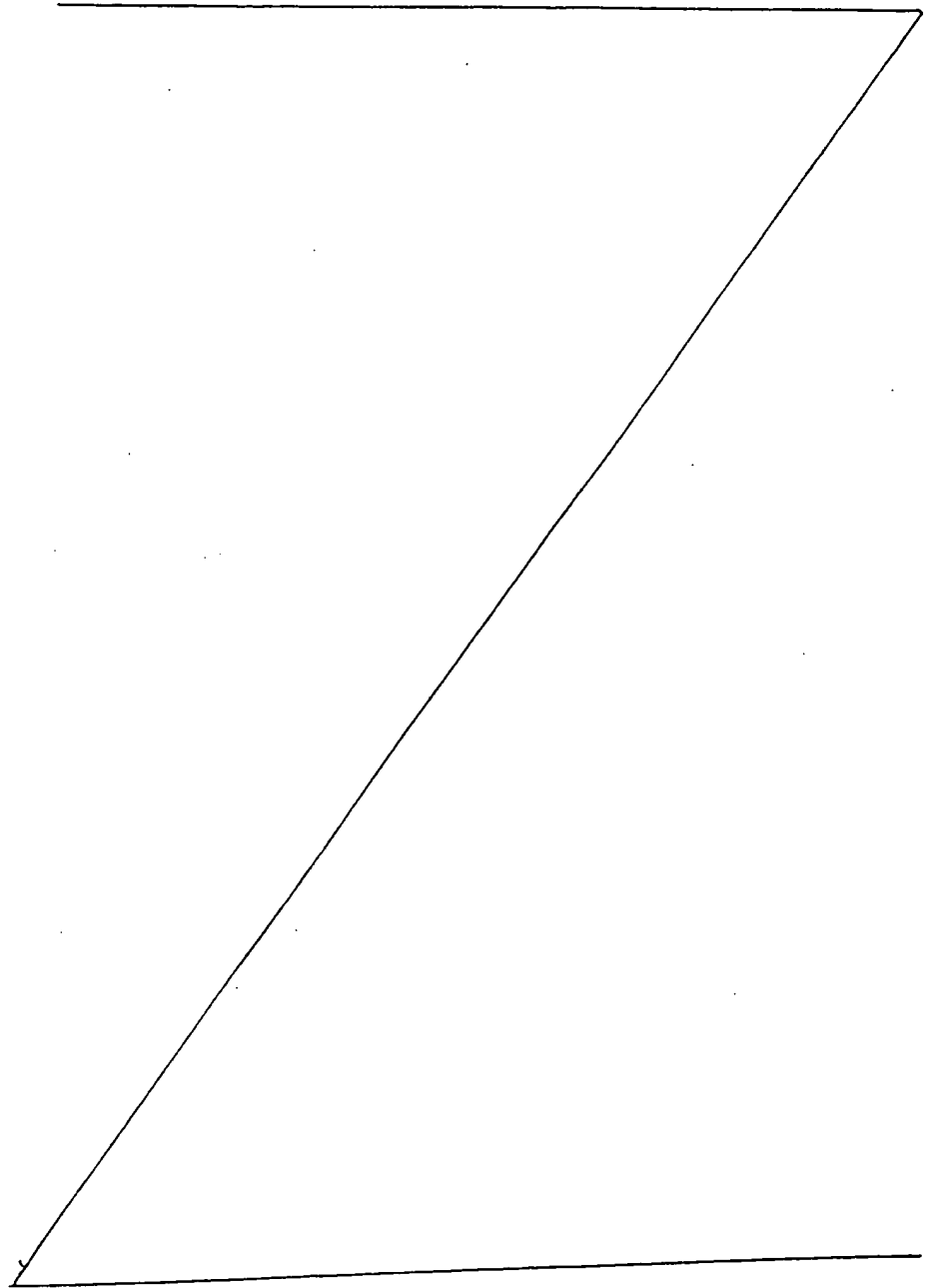
5 Preferably the Fc receptor-like molecule is an amino acid mutant, variant or derivative of a native Fc receptor. This means that the Fc receptor-like molecule comprises a peptide which has undergone deletion,
10 insertion, substitution or other changes to its amino acid residues compared to a native Fc receptor. The native Fc receptor providing the basis for the mutant, variant or derivative may be derived from human or animal species. Such animal species are preferably mammalian species such as mice, rats, rabbits, bovine, ovine, porcine or caprine species.

15 Deletion, insertion or substitution of amino acids to produce the Fc receptor-like molecule of the present invention may be performed by known means. Where the Fc receptor-like molecule is recombinant derived, the nucleic acid encoding the molecule will have incorporated
20 in its sequence the appropriate code for one or more amino acid insertions or substitutions or have undergone the appropriate deletion from its coding sequence. Where the receptor-like molecule is produced by *de novo* peptide synthesis the desired amino acid sequences may be
25 incorporated.

Insertions or substitutions may be achieved by placing a stretch of amino acid residues from another type of Fc receptor into the Fc receptor-like molecule which is being constructed. For example the first domain from one
30 receptor such as Fc_γ receptor may be used to replace the first domain in Fc_γ receptor to produce the desired result. Alternatively, or in addition, site directed mutagenesis or other techniques may be used to achieve amino acid substitution. Deletions may be achieved by removal of one
35 or more amino acids.

Substitution of amino acids may be conservative by replacing an amino acid with a residue of similar

properties. For example, the amino acid substitution may be in accordance with Table 1.



- 11 -

Table 1

Suitable residues for amino acid substitutions

	<u>Original Residue</u>	<u>Exemplary Substitutions</u>
	Ala	Ser
5	Arg	Lys
	Asn	Gln; His
	Asp	Glu
	Cys	Ser
	Gln	Asn
10	Glu	Ala
	Gly	Pro
	His	Asn; Gln
	Ile	Leu; Val
	Leu	Ile; Val
15	Lys	Arg; Gln; Glu
	Met	Leu; Ile
	Phe	Met; Leu; Tyr
	Ser	Thr
	Thr	Ser
20	Trp	Tyr
	Tyr	Trp; Phe
	Val	Ile; Leu

Alternatively substitutions may be with an amino acid of different chemical characteristics imparting a different character to the molecule when compared to a native Fc receptor.

In a preferred embodiment the invention relates to an Fc receptor-like molecule having enhanced ability to bind immunoglobulin wherein the enhanced ability is brought about by alteration of one or more amino acid residues which affect immunoglobulin binding ability.

The phrase "enhanced ability to bind immunoglobulin" means that the molecule has an immunoglobulin binding activity higher than, or increased

- 12 -

compared to, a native Fc receptor in a given class.

The alteration of one or more amino acid residues may be in the first or second domain.

Where the Fc receptor-like molecule has an enhanced ability to bind IgG, preferably alterations in the first domain to included changes to the A/B, C/C' and/or E/F loops and/or G/A strand. The loops referred to hereafter are the loops identified in the putative 3-D structures or their equivalents for the receptors discussed earlier and identified in the Examples. The term "equivalents" means amino acid residues that occur in the same position on the native Fc receptor which comprise the putative loops. It also includes equivalent loop structures in other native Fc receptors. In addition all of the amino acid residue positions discussed herein are relative to the amino acid sequences of Fc_γR_{II} or Fc_γR_I.

The loops of Fc_γR_{II} are as follows:

20	Domain 1	A/B	Glu ¹⁰ - Ser ²¹
		C/C'	Asn ⁴² - Ile ⁴⁶
		E/F	Asn ⁵⁹ - Asp ⁶²
	Domain 2	B/C	Ser ¹⁰⁹ - Val ¹¹⁶
		C'/E	Phe ¹²⁹ - Pro ¹³⁴
		F/G	Asn ¹⁵⁴ - Ser ¹⁶¹
	G/A strand		Val ⁷⁹ - Pro ⁹³

25 Loops for Fc_γR_I are:

30	Domain 1	A/B	Asn ¹⁰ - Asn ²¹
		C/C'	Asn ⁴² - Leu ⁴⁵
		E/F	Lys ⁵⁹ - Glu ⁶¹
	Domain 2	B/C	Trp ¹¹⁰ - Lys ¹¹⁷
		C'/E	Tyr ¹²⁹ - His ¹³⁴
		F/G	Lys ¹⁵⁴ - Ile ¹⁶⁹
	G/A strand		Val ⁷⁹ - Ser ⁹³

- 13 -

Alterations to the second domain of a Fc receptor-like molecule specific for IgG include changes in the B/C, C'/E and/or F/G loops, and/or G/A strand which connects domains 1 and 2.

5 Preferably the changes comprise substitution of one or more amino acids especially a conservative substitution. Such changes include but are not limited to replacement by alanine, glycine, serine, asparagine or small synthetic neutrally charged amino acids. Most
10 preferably the replacement is alanine.

More preferably the alterations are at the following positions 133, 134, 158, 159 and/or 160.

Still more preferably the Asp¹³³ and/or Pro¹³⁴ residues of FcγRII are replaced by alanine.

15 Where the Fc receptor-like molecule has an enhanced ability to bind IgE preferably the alterations in the first domain include changes in A/B, C/C' and/or E/F loops and/or the G/A strand that connects domain 1 and domain 2.

20 Alterations to the second domain of a Fc receptor-like molecule specific for IgE include changes in the B/C, C'/E and/or F/G loops.

More preferably the changes are at the following positions 130, 156, 160 and/or 161.

25 Still more preferably the Trp¹³⁰, Trp¹⁵⁶, Tyr¹⁶⁰ and/or Glu¹⁶¹ is/are replaced by alanine.

In another preferred embodiment the invention relates to an Fc receptor-like molecule having reduced ability to bind immunoglobulin wherein the reduced ability
30 is brought about by the alteration of one or more amino acid residues which affect immunoglobulin binding ability.

The phrase "reduced ability to bind immunoglobulin" means that the molecule has an immunoglobulin binding activity lower than, or decreased
35 compared to, a native Fc receptor in a given class. This includes a reduced activity for binding of one form of immunoglobulin such as, for example, dimeric

- 14 -

immunoglobulin.

The reduced binding ability may be brought about by deletions, insertions or substitutions of amino acid residues in the first or the second domain. Preferably the
5 reduced binding ability will be the result of substitution or deletion of one or more amino acid residues although insertions are also clearly contemplated.

Preferably substitutions will be with an amino acid residue (natural or synthetic) which has different
10 chemical characteristics to the corresponding amino acid in the relevant native Fc receptor in question. Such as for example the substituted amino acid may have different charge, acidity or basicity.

The additions, substitutions and/or deletions may
15 be made in accordance with standard methods as described above.

Where Fc receptor-like molecule has a reduced ability to bind IgG preferably alterations in the first domain include replacement of that domain or changes to the
20 A/B, C/C' or E/F loops or G/A strand.

More preferably the changes are at the following positions 10 to 21, 42 to 48 and/or 59 to 62.

Alterations to the second domain of a Fc receptor-like molecule specific for IgG preferably include
25 changes to the F/G, B/C, or C'/C loops.

More preferably the changes are at the following positions 113, 114, 115, 116, 129, 131, 155 and/or 156.

Still more preferably the first domain is deleted or replaced by a domain from an Fc receptor for another
30 immunoglobulin.

Alternatively still more preferably the Lys¹¹³, Pro¹¹⁴, Leu¹¹⁵, Val¹¹⁶, Phe¹²⁹ and/or Arg/His¹³¹ of Fc_{RII} is/are replaced by alanine.

Where the Fc receptor-like molecule has a reduced
35 ability to bind IgE preferably alterations in the first domain include the A/B, C/C' or E/F loops.

- 14 -

immunoglobulin.

The reduced binding ability may be brought about by deletions, insertions or substitutions of amino acid residues in the first or the second domain. Preferably the reduced binding ability will be the result of substitution or deletion of one or more amino acid residues although insertions are also clearly contemplated.

Preferably substitutions will be with an amino acid residue (natural or synthetic) which has different chemical characteristics to the corresponding amino acid in the relevant native Fc receptor in question. Such as for example the substituted amino acid may have different charge, acidity or basicity.

The additions, substitutions and/or deletions may be made in accordance with standard methods as described above.

Where Fc receptor-like molecule has a reduced ability to bind IgG preferably alterations in the first domain include replacement of that domain or changes to the A/B, C/C' or E/F loops or G/A strand.

More preferably the changes are at the following positions 10 to 21, 42 to 48 and/or 59 to 62.

Alterations to the second domain of a Fc receptor-like molecule specific for IgG preferably include changes to the F/G, B/C, or C'/C loops.

More preferably the changes are at the following positions 113, 114, 115, 116, 129, 131, 155 and/or 156.

Still more preferably the first domain is deleted or replaced by a domain from an Fc receptor for another immunoglobulin.

Alternatively still more preferably the Lys¹¹³, Pro¹¹⁴, Leu¹¹⁵, Val¹¹⁶, Phe¹²⁹ and/or Arg/His¹³¹ of Fc_{RII} is/are replaced by alanine.

Where the Fc receptor-like molecule has a reduced ability to bind IgE preferably alterations in the first domain include the A/B, C/C' or E/F loops.

- 15 -

More preferably the changes are at the following positions in the first domain 10 to 21, 42 to 48 and/or 59 to 62.

Alterations in the second domain of a Fc receptor-like molecule specific for IgE preferably include changes to the F/G, C'/E or B/C loops.

More preferably changes are at one or more of the following positions: 131, 132, 155, 158 and/or 159.

Still more preferably the B/C loop (Ser¹⁰⁹ to Val¹¹⁶) of Fc_γRI is deleted or replaced by a B-C loop from a receptor for another immunoglobulin.

Alternatively still more preferably the C'/E loop (Ser¹³⁰ to Thr¹³⁵) of Fc_γRI is deleted or replaced by a C'/E loop from a receptor from another immunoglobulin.

Still more preferably Tyr¹³¹, Glu¹³², Val¹⁵⁵, Leu¹⁵⁸ and/or Asp¹⁵⁹ of Fc_γRI is/are replaced by alanine.

In addition to the alteration discussed earlier the alterations contemplated may be other alterations which make the polypeptide useful as a therapeutic or reagent. Thus the alteration may be in the form of an addition deletion or subtraction. For example where addition is contemplated a polypeptide or other suitable molecule may be added to a native Fc receptor in order to increase the size of the molecule or to provide a linker which links a native Fc receptor with a reporter molecule.

In a second embodiment the invention relates to a polypeptide with Fc binding ability wherein the polypeptide is altered compared to a native Fc receptor such that the size of the polypeptide is larger than said native Fc receptor.

The inventors have surprisingly found that the addition of an amino acid sequence to a polypeptide with Fc binding ability not only results in an extended life in the body of an animal but also retains biological activity of the Fc binding component. Thus, the augmented polypeptide has a greater serum half life compared to soluble protein with Fc binding ability and is therefore capable of being

- 16 -

more effective as a therapeutic than an altered soluble native Fc receptor.

5 Preferably the polypeptide with Fc binding ability is in an isolated form such as that described earlier in relation to the Fc receptor-like molecule.

10 Preferably the polypeptide of the invention is in soluble form where it is to be used in serum or other administration routes requiring solubility. This would generally mean that the transmembrane region is not included however the intracellular region may be included.

15 Preferably the augmentation of the Fc binding polypeptide is achieved by linking an amino acid sequence, such as a second polypeptide or other suitable molecule to a peptide with Fc binding ability. The peptide with Fc binding ability may be a native receptor, a modified native receptor (for example a receptor without the transmembrane or cytoplasmic regions) or a Fc receptor-like molecule as described earlier.

20 Preferably the polypeptide with Fc binding ability is of a size larger than about 67 kD since proteins below this size are excreted by the kidneys. More preferably the polypeptide is in the size range of 67 to 1000 kD. Still more preferably the polypeptide is approximately 100 kD.

25 Preferably the augmentation is achieved by adding a peptide, polypeptide or other molecule which is well tolerated in an animal. Such peptides or polypeptides include human serum albumin (HSA), bovine serum albumin, other Fc receptors, immunoglobulin from any species, 30 cytokines, complement regulating molecules (eg. CD46, CD55, CD59), complement receptors and cytokine receptors. Such additions could include more than one molecule of the same or a different type. The other molecules suitable include dextran, carbohydrates, polyethylene glycol and synthetic 35 polymers.

The polypeptide may be directed against any class of Ig. Preferably the polypeptide is directed against IgG

- 17 -

or IgE. Even more preferably the polypeptide is HSA:FcγRII as herein described.

The polypeptide with Fc binding ability may be produced by any convenient means such as through
5 recombinant DNA technology as a fusion protein, or alternatively the two components may be produced separately (by recombinant DNA or other means) and then linked. Alternatively one or both components may be made via peptide synthesis. These methods are described in more
10 detail later on.

In a third embodiment the invention relates to a polypeptide with Fc binding ability comprising a component capable of detection.

The term "component capable of detection" means
15 that the polypeptide is linked to or contains a detectable signal such as a reporter molecule, a biosensor or a molecule which may be directly or indirectly detected. The reporter or label is a component which is capable of detection such as by radio labelling, chemiluminescent
20 labelling, fluorometric labelling, chromophoric labelling or labelled antibody binding. Detection may be achieved by direct labelling of the polypeptide with a ligand such as, for example, biotin which specifically binds to streptavidin linked covalently to horseradish peroxidase or
25 another enzyme such as alkaline phosphatase. The actual component capable of detection may be suitably chosen by those skilled in the art.

Preferably the polypeptide is in an isolated form as described above.

30 Preferably the polypeptide comprising a component capable of detection comprises the polypeptide described in the first or second embodiments of the invention. Preferably the component capable of detection is present on, or comprises part of the augmentation. Alternatively,
35 the component capable of detection may be present on the Fc binding portion of the molecule provided this does not inhibit Fc binding ability.

- 18 -

Preferably the component capable of detection is an enzyme such as horseradish peroxidase.

In another embodiment the present invention relates to a method of testing a compound for its ability act as an antagonist of an Fc receptor said method comprising contacting the compound with a polypeptide with Fc binding ability or a native Fc receptor under conditions and for a time sufficient to allow binding of the compound to the polypeptide or receptor and determining whether binding has occurred.

The term "Fc receptor" used directly above includes any native or non-native Fc receptor or a portion thereof which binds Fc.

The compound tested may be any compound which could possibly be useful as an Fc receptor antagonist. Such compounds may be antibodies, including polyclonal and monoclonal antibodies, or fragments of antibodies, such as scantibodies, antibody mimetics (Smythe & von Itzstein) and the like. The compounds may be extracts from produced from plants or animals such as rain forest plants, corals and the like. The compounds may be peptides or peptide-like substances or other organic substances such as those derived from combinational libraries (Geysen *et al* 1995; Stratton-Thomas *et al* 1995, Lorne Conference on Protein Structure and Function, Australia).

The method of the invention may be conducted in any suitable manner known to those skilled in the art. The polypeptide with Fc binding ability or the Fc receptor may be attached to a support leaving the Fc binding site free. Then the immunoglobulin and compound under investigation may be added to the attached polypeptide or Fc receptor. Alternatively Ig or the Fc fragment thereof may be attached to a support. The polypeptide or the Fc receptor and compound under investigation may be added to the bound ligand.

Those skilled in the art will also be familiar with the conditions and time needed to allow any binding of

- 19 -

the polypeptide or native Fc receptor to the compound being tested.

Determination of whether binding has taken place may be made by any convenient means. This may be achieved
5 by common detection method such as by using a labelled polypeptide or labelled FcR or by using a labelled Ig. Such detection methods are well known by those skilled in the art and are discussed elsewhere in this document.

The method may be used to screen compounds which
10 are potential inhibitors of receptors for any class of immunoglobulin. Preferably the method is used to screen compounds for their ability to block binding of Ig to the Fc γ receptor or the Fc ϵ receptor.

In another embodiment the present invention
15 relates to antagonist compounds identified by the above method which interfere with the amino acid residues in Fc receptors which are involved in immunoglobulin binding. Such compounds embrace any compound which interact with these amino acid residues or regions of residues so as to
20 interfere with or reduce immunoglobulin binding and include compounds which bind to these residues or regions of residues by hydrophobic, electrostatic or other chemical interaction. This also includes compounds which interfere with the structural integrity of the molecule thereby
25 reducing its affinity for immunoglobulin as well as compounds which directly interfere with the amino acids involved in immunoglobulin binding. Also included are compounds that bind to Ig, as opposed to its receptor, and thereby inhibit the receptor-Ig interaction. The
30 antagonists may be antibodies, peptides, peptide-like substances or any other compound as described above. Preferably the antagonist once identified, is in an isolated form. As such, the Fc receptor antagonists may be used in the treatment of asthma, rheumatoid arthritis,
35 lupus , glomerulonephritis, IgA nephropathies, etc. and a host of immune complex and other diseases including but not limited to autoimmune diseases.

- 20 -

Where the antagonist is intended to block or reduce IgG binding then the compound will preferably interact with the A/B, C/C' or E/F loops in the first domain or with the F/G, B/C or C'/E loops in the second domain or the G/A strand. Preferably the compounds will be capable of binding to or blocking the function of one or more of the following residues in the native Fc receptors 10-21, 42-48, 59-62, 113, 114, 115, 116, 129 131, 133, 156, 158, 159 and/or 160 or their functional equivalents.

Where the antagonist is intended to block or reduce IgE binding in disease such as asthma or allergy then the compound will preferably interact with the A/B, C/C' or E/F loops in the first domain and/or the F/G, C'/E or B/C loops of the second domain or the G/A strand.

Preferably the compounds will be capable of binding to or blocking the function of the following residues: 10-21, 42-48, 59-62, 131, 132, 155, 158 and/or 159.

In another embodiment the present invention contemplates pharmaceutical compositions containing as an active ingredient the polypeptide with Fc binding ability including the Fc receptor-like molecules or the antagonist compounds described above, depending on the condition to be treated, together with a pharmaceutically appropriate carrier or diluent. For example, polypeptide with Fc binding ability or Fc receptor-like molecule with enhanced immunoglobulin binding ability may be used to treat diseases including by not limited to glomerulonephritis, lupus, arthritis, heparin induced thrombocytopenia thrombosis syndrome (HITTS) or idiopathic thrombocytopenia pupuera (ITP), asthma, allergy, eczema, Ig nephropathies and rheumatoid arthritis. Fc receptor-like molecule with reduced binding ability may be used to treat disease where it is desirable to remove only some or one particular kind of immunoglobulin. Antagonist compounds may be used in the treatment of inappropriate or excessive immunoglobulin levels or aggregates or immune complexes are part of the

- 21 -

symptoms of the disease such as asthma, allergy, rheumatoid arthritis, etc. For the purpose of describing the pharmaceutical compositions, all of the above molecules and compounds will be referred to herein as "active molecules".

5 The use of the term "active molecules" therefore should be read as one or more of the above molecules depending on the condition to be treated.

The active molecules of the pharmaceutical compositions are contemplated to exhibit therapeutic activity when administered in an amount which depends on the particular case. The variation depends, for example, on the animal and the active molecule. For example, from about 0.05 μg to about 100 mg of Fc receptor-like molecule or antagonist compound may be administered per kilogram of

10 body weight per day to alter Fc receptor-immunoglobulin interaction. Dosages may be adjusted to provide the optimum therapeutic response. For example, several divided doses may be administered daily, weekly, monthly, or in other suitable time intervals or the dose may be

15 proportionally reduced as indicated by the exigencies of the situation. The active molecules may be administered in a convenient manner such as by the oral, intravenous (where water soluble), intraperitoneal, intramuscular, subcutaneous, topical, intranasal, intradermal or

20 suppository routes or implanting (e.g. using slow release molecules). Depending on the route of administration, the active molecules may be required to be coated in a material to protect said molecules from the action of enzymes, acids and other natural condition which may inactivate said

25 ingredients.

30

The active molecules may also be administered in dispersions prepared in glycerol, liquid polyethylene glycol, and/or mixtures thereof and in oils. Under ordinary conditions of storage and use, these preparations

35 contain a preservative to prevent the growth of microorganisms.

- 22 -

In another embodiment the present invention relates to a nucleic acid molecule encoding a polypeptide with Fc binding ability wherein the structure of the polypeptide is altered compared to a native Fc receptor by addition, deletion and/or substitution of the amino acids encoded by the nucleic acid such that said alteration results in improved characteristics compared to said native receptor.

The term "nucleic acid molecule" refers to molecule made up of natural or synthetic purines and pyrimidines. The nucleic acid molecule may be DNA or RNA, single or double stranded, linear or circular and may form a part of a larger nucleic acid molecule.

The term "polypeptide with Fc binding ability" the meaning given earlier.

The terms "the polypeptide is altered compared to a native Fc receptor" and "improved characteristics" have the same meaning as given earlier.

Preferably the nucleic acid molecule is in isolated form meaning it has undergone some purification away from other nucleic acids and/or non-nucleic acid molecules. The purity of the preparation may be represented by at least 40% nucleic acid molecule encoding a polypeptide with Fc binding ability, preferably at least 60% nucleic acid molecule, more preferably at least 75% nucleic acid molecule, even more preferably at least 85% nucleic acid molecule, even more preferably at least 95% nucleic acid molecule relative to nucleic acid molecules not encoding a polypeptide with Fc binding ability as determined by nucleic acid homology, sequence or any other convenient means.

In a preferred embodiment the present invention relates to a nucleic acid molecule encoding an Fc receptor-like molecule comprising an altered ability to bind Fc wherein said ability is brought about by alteration of one or more amino acid residues which affect immunoglobulin binding ability.

- 23 -

The phrase "Fc receptor-like molecule" has the meaning given earlier.

The phrases "altered ability to bind immunoglobulin", "the alteration of one or more amino acid residues which affect immunoglobulin binding ability" have
5 the same meanings as given earlier.

The nucleic acid molecule may encode an Fc receptor-like molecule which functions as a receptor for any type of immunoglobulin such as IgG, IgE, IgA, IgM, or
10 IgD. The Fc receptor-like molecule encoded may be derived from any species, such as human, mouse, rat, bovine, ovine, caprine etc and may comprise a combination of different sources. The term "derived from" means that the original coding sequence providing the basis for the nucleic acid
15 molecule prior to alteration comes from the species specified.

Those skilled in the art will know which techniques may be used to alter the amino acids encoded by a nucleic acid in order to produce a nucleic acid molecule
20 in accordance with the invention. The nucleic acid molecule may be made by site mutagenesis of DNA encoding native Fc receptor, splice extension overlap PCR, de novo synthesis, etc.

Preferably the nucleic acid molecule encodes a mutant, derivative or variant of a native Fc receptor as
25 described earlier.

Preferably the nucleic acid molecule encodes an Fc receptor like peptide which has enhanced ability to bind IgG or IgE. The phrase "enhanced ability" has the same
30 meaning as given earlier.

More preferably where the nucleic acid molecule encodes an Fc receptor-like molecule with an enhanced ability to bind IgG the molecule comprises codons resulting in one or more altered amino acids in the A/B, C/C' and/or
35 E/F loops of the first domain or B/C, C'/E and/or F/G loops of the second domain and/or the G/A strand that connects the two domains.

- 24 -

Still more preferably the codons result in altered amino acids at positions 158, 159, 160, 133 and/or 134. Most preferably the altered amino acids comprise alanine, glycine, serine, asparagine or small synthetic neutrally charged amino acids. Most preferably the codon specifies the amino acid alanine.

Still more preferably the nucleic acid molecule comprises a cDNA encoding Fc_γRII with the codon for Asp¹³³ and/or Pro¹³⁴ specifying alanine. Even more preferable the nucleic acid molecule is Asp¹³³-Ala or Pro¹³⁴-Ala as described in the Examples.

Alternatively more preferably the nucleic acid molecule encodes an Fc receptor-like molecule with an enhanced ability to bind IgE. The molecule comprises codons resulting in one or more altered amino acids in the A/B, C/C' and/or E/F loops of the first domain or the F/G, C'/E and/or B/C loops of the second domain or the G/A strand.

Still more preferably the codons result in altered amino acids at positions 130, 156, 160 and/or 161.

Still more preferably the nucleic acid molecule comprises a cDNA encoding Fc_γRI with the codon for Trp¹³⁰, Trp¹⁵⁶, Tyr¹⁶⁰ and/or Glu¹⁶¹ specifying alanine. Even more preferably the nucleic acid molecule is Trp¹³⁰-Ala, Asp¹⁵⁹-Ala, Tyr¹⁶⁰-Ala or Glu¹⁶¹-Ala as described in the Examples.

Alternatively preferably the nucleic acid molecule encodes an Fc receptor like peptide which has reduced ability to bind IgG or IgE. The phrase "reduced ability" has the same meaning as given earlier.

The amino acid alterations specified by the codons will generally be amino acids with different chemical characteristics such as that described earlier.

More preferably where the nucleic acid molecule encodes an Fc receptor-like molecule with a reduced ability to bind IgG the molecule comprises codons which result in one or more altered amino acids in the A/B, C/C' and/or E/F loops in the first domain and/or the B/C, C'/E and/or F/G

- 25 -

loops in the second domain and/or the G/A strand.

Still more preferably the codons result in altered amino acids at positions 10-21, 42-48, 59-62, 113, 114, 115, 116, 129, 131 155 and/or 156.

5 Even more preferably the codons for the first domain of Fc_γR_{II} are removed or replaced by those for a receptor for another immunoglobulin.

Alternatively even more preferably the codons for Lys¹¹³, Pro¹¹⁴, Leu¹¹⁵, Val¹¹⁶, Phe¹¹⁹, Arg/His¹³¹ and Ile¹⁵⁵
10 and/or Gly¹⁵⁶ are replaced by the codon for alanine in the Fc_γR_{II}. Still more preferably the nucleic acid molecule comprises the constructs D1eD2_γ, Lys¹¹³-Ala, Pro¹¹⁴-Ala, Leu¹¹⁵-Ala, Val¹¹⁶-Ala, Phe¹¹⁹-Ala and/or Arg/His¹³¹-Ala described in the Examples.

15 Alternatively more preferably where the nucleic acid molecule encodes an Fc receptor-like molecule with a reduced ability to bind IgE the molecule comprises codons which result in one or more altered amino acids in the A/B, C/C' and/or E/F loops in the first domain or the F/G, C'/E
20 and/or B/C loops in the second domain or the G/A strand.

Still more preferably the codons result in altered amino acids at positions 10-21, 42-48, 59-62, 129, 131, 132, 155, 158, 159.

25 Even more preferably the codons for the first domains of Fc_γR_I are removed or replaced by those for a receptor for another immunoglobulin.

Alternatively even more preferably the codons for Tyr¹²⁹, Tyr¹³¹, Glu¹³², Val¹⁵⁵, Leu¹⁵⁸ and/or Asp¹⁵⁹ is/are
30 replaced by the codon for alanine in Fc_γR_I. Still more preferably the nucleic acid molecule of the invention comprises the constructs γ109-116ε, γ130-135ε, Tyr¹³¹-Ala, Glu¹³²-Ala, Val¹⁵⁵-Ala, Leu¹⁵⁸-Ala and Asp¹⁵⁹-Ala as described in the Examples.

35 In another preferred embodiment the invention relates to a nucleic acid molecule encoding a polypeptide with Fc binding ability wherein the polypeptide is altered compared to native Fc receptor such that the size of the

- 26 -

polypeptide is larger than said native Fc receptor.

Preferably the nucleic acid molecule encodes a polypeptide that is soluble.

5 Preferably the nucleic acid comprises a component encoding naive Fc receptor, the extracellular region thereof or the Fc receptor-like molecule described earlier and a component encoding an amino acid sequence that results in the protein being larger than about 67 kD. Preferably the protein encoded is in the range of 67 kD to
10 1000 kD.

Preferably the non-Fc binding component encoded is a peptide well tolerated by an animal such as HSA, other Fc receptors, Igs from any species, cytokines and complement regulating molecules such as those discussed
15 earlier. Even more preferably the nucleic acid has the same sequence as HSA : Fc γ R11 or is substantially similar thereto.

In a further preferred embodiment the invention relates to a nucleic acid molecule encoding a polypeptide
20 with Fc binding ability comprising a component capable of detection.

The term "component capable of detection" has the same meaning as given earlier.

25 Preferably the nucleic acid molecule encodes the polypeptide described in the first or second embodiments of the invention and preferably the component capable of detection is encoded by the appropriate nucleotide sequence such as a nucleotide sequence encoding an immunoglobulin, HRP, Alk-Phos or other detectable component.

30 The invention also extends to the nucleic acid molecules used as primers to produce the nucleic acid molecule of the invention. The primers described in the Examples are particularly preferred.

35 The invention further extends to a method of making the nucleic acid molecule of the invention comprising producing a nucleic acid encoding a polypeptide with Fc binding ability the structure of which is altered

- 27 -

compared to a native Fc receptor by addition, deletion or substitution of one or more amino acids such that said alteration results in improved characteristics compared to said native receptor.

5 The term "producing a nucleic acid molecule" encompasses direct mutagenesis of a native Fc receptor gene by chemical means, SOE-PCR, *de novo* synthesis or addition of a nucleic acid such that a fusion protein is encoded. The different methods of effecting mutations will be well
10 known to those skilled in the art.

The invention also extends to vectors comprising the nucleic acid molecules encoding the polypeptide with Fc binding ability described above and host cells expressing the nucleic acid molecules. Suitable vectors and host cells
15 will be well known to those skilled in the art. In a preferred form the invention relates to the cDNA constructs and host cells containing them described in the Examples.

The invention also relates to a method of producing the polypeptides of the invention by recombinant
20 means. The method comprises causing the nucleic acid molecule of the invention to be expressed and isolating or purifying the polypeptide to at least some degree. Generally the nucleic acid molecule will be present on a suitable vector or integrated into a host genome. Suitable
25 hosts, vectors and purification methods will be known to those skilled in the art. However for the purposes of illustration only, some discussion of hosts and vectors is given below.

Suitable prokaryotic hosts include but are not
30 limited to *Escherichia*, *Streptomyces*, *Bacillus* and the like. Suitable eukaryotic host include but are not limited to yeast, such as *Pichia* and *Saccharomyces* and animal cells in culture such as VERO, HeLa, mouse C127, Chinese hamster ovary (CHO), WI-38, BHK, COS, MDCK, NS1, J558 and insect
35 cell lines. Such recombinant techniques have now become well known and are described in *Methods of Enzymology*, (Academic Press) Volumes 65 and 69 (1979), 100 and 101

- 28 -

(1983), and the references cited therein. An extensive technical discussion embodying most commonly used recombinant DNA methodologies can be found in Maniatis et al., Molecular Cloning, Cold Spring Harbor Laboratory
5 (1982) or Current Protocols in Molecular Biology, Greene Publishing (1988, 1991).

Once the nucleic acid encoding the polypeptide has been produced, the DNA may be introduced into an expression vector and that construction used to transform
10 an appropriate host cell. An expression vector is characterised as having expression control sequences such that when a DNA sequence of interest is operably linked thereto, the vector is capable of directing the production of the product encoded by the DNA sequence of interest in a
15 host cell containing the vector.

After the recombinant product is produced it is desirable to recover the product. If the product is exported by the cell producing it, the product can be recovered directly from the cell culture medium. If the
20 product is retained intracellularly, the cells must be physically disrupted by mechanical, chemical or biological means in order to obtain the intracellular product.

With a protein product, it is desirable that the purification protocol provides a protein product that is
25 essentially free of other proteins, and eliminates or reduces to acceptable levels other host cell contaminants, such as DNA, RNA, potential pyrogens and the like. Thus it may be desirable to use a commercially available system such as FLAG™ peptide system to allow easy purification.
30 Alternatively the inherent Ig binding property of the polypeptide may be used to affinity purify it or anti-Fc receptor antibodies may be used.

As mentioned above, a variety of host cells may be used for the production of the polypeptide of the
35 invention. The choice of a particular host cell is well within the knowledge of the ordinary skilled person taking into account, *inter alia*, the nature of the receptor, its

- 29 -

rate of synthesis, its rate of decay and the characteristics of the recombinant vector directing the expression of the receptor. The choice of the host cell expression system dictates to a large extent the nature of the cell culture procedures to be employed. The selection of a particular mode of production be it batch or continuous, spinner or air lift, liquid or immobilised can be made once the expression system has been selected. Accordingly, fluidised bed bioreactors, hollow fibre bioreactors, roller bottle cultures, or stirred tank bioreactors, with or without cell microcarrier may variously be employed. The criteria for such selection are appreciated in the cell culture art.

In another embodiment the invention relates to a method of determining the presence of and/or amount of immunoglobulin in a sample said method comprising contacting said sample with the polypeptide of the present invention, or an Fc receptor or a part thereof, for a time and under conditions sufficient to allow the polypeptide or Fc receptor or part thereof and any immunoglobulin present in said sample to bind and detecting the presence of and/or determining the amount of said bound polypeptide-immunoglobulin, Fc receptor-immunoglobulin or part Fc receptor-immunoglobulin.

The sample may be from any source where it is desired to determine the presence of immunoglobulin. Samples from body fluids and secretions such as blood, saliva, sweat, semen, vaginal secretions may be used. Solid tissue samples such as biopsy specimens from kidneys, etc, are also contemplated.

The term "an Fc receptor" refers to any native or non-native Fc receptor or a portion thereof whether derived from natural sources or by recombinant means. Preferably the Fc receptor is at least partly purified.

Detection of the bound polypeptide or Fc receptor can be determined by any convenient means. Preferably presence of immunoglobulin is detected by a reporter

- 30 -

molecule. Alternatively the bound antibody-receptor may be detected by an anti-polypeptide labelled with a label, reporter molecule anti-Ig or other detectable signal. Determination of the amount of immunoglobulin may be made by comparison to a standard curve obtained using known quantities of Ig under identical conditions.

The polypeptide of the present invention or Fc receptor may be soluble or bound to a solid support such as nitrocellulose, paper, matrices or resins which will be known to those skilled in the art.

Another embodiment of the invention relates to a kit for detecting immunoglobulin including immune complexes in a sample, said kit comprising in compartmentalised form a first compartment adapted to receive the polypeptide of the invention or an Fc receptor and at least one other compartment adapted to contain a detector means.

The phrase "detector means" refers to means for detecting immunoglobulin bound to Fc receptor-like molecule and includes the appropriate substrates, buffers, etc required for detection of the bound immunoglobulin-receptor.

In this connection the polypeptide of the invention in the form of an Fc receptor-like molecule with enhanced ability to bind immunoglobulin of the present invention provides a useful laboratory reagent. This is particularly so with an Fc receptor-like molecule specific for IgG because the Fc receptor-like molecule is capable of selectively binding immunoglobulin complex. Thus the Fc receptor-like molecule including one with enhanced Ig binding ability may be used in immunoprecipitation as a replacement for protein A, for example, which does not exhibit a selective binding ability.

In a related embodiment the present invention provides a method of detecting immune complex in a sample comprising contacting said sample with the polypeptide of the invention or an Fc receptor specific for IgG for a time and under conditions sufficient for any complex present in

- 31 -

the sample and the polypeptide or Fc receptor to form a further complex and detecting said further complex.

The above method utilises the ability of the polypeptide of the invention and the Fc receptor for IgG to bind complexes as they do not recognise monomeric IgG. Further the use of the Fc receptor-like molecule with enhanced activity provides a more sensitive assay as it will detect lower levels of complex in the sample and also be selective for the same.

The above method may be a useful tool in diagnosis of diseases where immune complexes are implicated such as, for example, glomerulonephritis, lupus, arthritis, heparin induced thrombocytopenia thrombosis syndrome (HITTS), Gullien-Baré syndrome or idiopathic thrombocytopenia pupuera (ITP).

In a further embodiment relates to a method of removing immunoglobulin from a sample comprising contacting said sample with the polypeptide of the invention or an Fc receptor for a time and under conditions suitable for any immunoglobulin in the sample to form a complex with said polypeptide or Fc receptor and separating said complex from the remainder of the sample.

The sample used in the method may be any sample such as that described above or may be a sample continuously taken from a patient such as blood or plasma which is withdrawn, treated by the method and then returned to the patient as part of a closed system.

Preferably the polypeptide or Fc receptor used is specific for IgG and/or IgA. It has been noticed by the present inventors that Fc γ RII described herein is able to bind IgA. Thus, use of Fc γ RII would be particularly advantageous in the treatment of diseases involving immune complexes of IgG and/or IgA such as IgA nephropathies. Preferably the method is directed at removing immune complex existing in the sample and the polypeptide used is capable of binding immune complexes containing IgG or IgA.

- 32 -

Separation of the complex may be achieved by any convenient means such as by standard haemoperfusion or plasmaphoresis technologies but utilising a device containing the polypeptide of the present invention or a Fc receptor or a portion thereof bound to a solid support. Such a solid support includes silica, sepharoseTM, agarose, cellulose membranes, etc. Such a device would preferably comprise a container enclosing the polypeptide or receptor or part thereof attached to a support, an inlet through which the sample can flow in and an outlet through which the sample can be returned to the patient.

In yet another embodiment the present invention relates to a method of removing immunoglobulin from a body fluid comprising taking body fluid from a patient, contacting the body fluid with the polypeptide of the invention or an Fc receptor, for a time and under conditions sufficient to allow the polypeptide to bind said immunoglobulin, removing said bound immunoglobulin from the body fluid and replacing said body fluid in the patient.

Preferably the method involves removal of immune complex. This may be used in the treatment of diseases where it is desirable to remove immune complex such as in lupus, IPT, HITTS, rheumatoid arthritis or after infection in a glomerulonephritis patient.

More preferably the method is used in plasmaphoresis in the treatment of immune complex diseases. Even more preferably the method utilises an Fc receptor-like molecule with enhanced ability to bind IgG.

Preferably the Fc receptor-like molecule is bound to a solid support such as a membrane when used in plasmaphoresis. Any suitable support could be used such as silica, agarose, sepharoseTM or cellulose derivatives and will be known to those skilled in the art.

In another embodiment the present invention relates to a method of treatment of disease where the disease involves immune complexes or antigen-antibody interactions, said method comprising administering an

- 33 -

effective amount of the polypeptide of the invention, an Fc receptor or an antagonist compound of the invention to a subject.

5 The subject may be a human or animal, preferably a mammal.

Preferably the polypeptide with an increased serum half life is used in the method of the invention. More preferably this polypeptide comprises the Fc receptor-like molecule with enhanced immunoglobulin binding ability 10 is used in the method. In some diseases however an Fc receptor-like molecule with reduced immunoglobulin, or differential immunoglobulin binding ability may be indicated such as where it is desirable bind one form of immunoglobulin and not another. For example, an Fc 15 receptor-like molecule with altered IgG binding ability such that it binds complexes and not monomers may be useful.

Preferably the polypeptides used in the method are soluble. More preferably they are administered in a 20 pharmaceutical composition. The polypeptide of the invention optionally comprising the Fc receptor-like molecules with enhanced IgG binding ability may be used in the treatment of diseases where an excess of immunoglobulin is implicated as a causative agent of the 25 inflammation or disease such as immune complex diseases, glomerulonephritis, lupus, rheumatoid arthritis, diseases involving inappropriate production of IgG after infection, heparin induced thrombocytopenia thrombosis syndrome (HITTS) hyperacute graft rejection and idiopathic 30 thrombocytopenia pupuera (ITP).

In addition, the polypeptides of the present invention, Fc receptor-like molecules with enhanced IgG binding ability may be used in the treatment of any disease involving IgE, where IgE is one of the causative agents of 35 disease. Such diseases include asthma, allergy and eczema.

Such a method comprises administering an effective amount of the polypeptide of the invention, or an

- 34 -

Fc receptor, to a patient.

It is envisaged that the polypeptide of the invention, particularly a soluble one comprising IgE specific Fc receptor-like molecule with enhanced activity according to the invention will be particularly useful as a competitive inhibitor of IgE binding when administered to a subject. The polypeptide will function in two ways. First, it will absorb unbound IgE and second it will displace already bound IgE or prevent rebinding of IgE by virtue of its strong affinity for IgE. In this way the action of IgE in an asthma attack or allergic reaction such as in food allergy or bee sting may be reduced or alleviated.

Similar comments apply to a soluble IgG specific polypeptide of the invention. It is envisaged that particularly a soluble IgG specific Fc receptor-like molecule with enhanced activity according to the invention will be useful as a competitive inhibitor of IgG binding when administered to patients. First it will absorb to immune complexes aggregates or IgG which will prevent binding to cell surface $Fc_\gamma R$, e.g. $Fc_\gamma RI$, $Fc_\gamma RII$, $Fc_\gamma RIII$ which will prevent or reduce activation of inflammation.

In this way immune complex induced inflammation, e.g. in rheumatoid arthritis, Good pastures syndrome, hyperacute graft rejection or lupus will be reduced or alleviated.

The invention will now be described with reference to the following non-limiting Examples.

Example 1

30 **Materials and Methods**

Chimeric $Fc_\gamma RII/Fc_\gamma RI$ and mutant $Fc_\gamma RII$ receptor cDNAs and expression constructs.

Chimeric $Fc_\gamma RII/Fc_\gamma RIa$ chain or mutant $Fc_\gamma RII$ cDNAs were constructed by Splice Overlap Extension (SOE) PCR (27) using the $Fc_\gamma RIIa^{3A}$ cDNA (7) as template. SOE PCR was performed as follows: Two PCR reactions were used to

- 35 -

amplify the Fc_γR_{II}-Fc_γR_I or Fc_γR_{II} fragments to be spliced together. The reactions were performed on 100ng of the Fc_γR_{IIa}NR cDNA in the presence of 500ng of each oligonucleotide primer, 1.25nM dNTPs, 50nM KCl, 10mM Tris-Cl pH 8.3 and 1.5nM MgCl₂, using 2.5 units of Taq polymerase (Amplitaq, Cetus) for 25 amplification cycles. A third PCR reaction was performed to splice the two fragments and amplify the spliced product. 100ng of each fragment (purified by size fractionation through an agarose gel) (28) was used with the appropriate oligonucleotide primers under the above PCR conditions.

The chimeric Fc_γR_{II}/Fc_γR_I a chain receptors were generated as follows. Chimera g, e109-116: oligonucleotide pairs (NR1 + CHM10) and (CHM09 + EG5) were used to produce two fragments which were spliced together using oligonucleotides NR1 and EG5. Chimera g, e130-135: oligonucleotide pairs (NR1 + PM12) and (PM11 + EG5) followed NR1 and EG5. The sequence of the oligonucleotide used and their positions of hybridisation with the Fc_γR_{IIa}NR cDNA are:

NR1, 5' - TACGAATTCCTATGGAGACCCAAATGTCTC-3', (nucleotide position 10-30);
 EG5, 5' - TTTGTCGACCACATGGCATAACG-3', (967-981);
 CHM09, 5' - CACATCCCAGTTCCTCCAACCGTGGCACCTCAGCATG-3', (419-437 with nucleotides 442-462 of Fc_γR_I a chain);
 CHM10, 5' - AGGAACTGGGATGTGTACAAGGTACATTCCTCCAG-3', (462-487 with 446-462 of Fc_γR_I a chain),
 PM11, 5' - GTGGTTCATACCAGAATTTCTGGGGATTTTCC-3', (473-490 with 492-506 of Fc_γR_I a chain);
 PM12, 5' - CTGGTATGAGAACCACACCTTCTCCATCCCAC-3'' (516-531 with 491-506 of Fc_γR_I a chain).

Sequences derived from Fc_γR_I a chain are underlined, Fc_γR_{II} not underlined; non-homologous sequences including restriction enzyme sites used in cloning of the PCR products are in bold type. Nucleotide positions refer

- 36 -

to the previously published Fc_γRIIa and Fc_γRI a chain cDNA sequences (7, 13).

The Fc_γRII Alanine point mutant cDNAs were generated using the following oligonucleotide combinations.

5 Pro¹¹⁴-Ala, (GBC01 + EG5) and (GBC02 + NR1); Lys¹¹³-Ala: (GBC03 + EG5) and (GBC04 + NR1); Leu¹¹⁵-Ala, (GBC05 + EG5) and (GBC06 + NR1); Val¹¹⁶-Ala, (GBC07 + EG5) and GBC08 + NR1; Phe¹²⁹-Ala, (GCE01 + EG5) and (GCE02 + NR1); Ser¹³⁰-Ala, (GCE03 + EG5) and GCE04 + NR1; Arg/His¹³¹-Ala (GCE05 + EG5) and GCE06 + NR1; Leu¹³²-Ala, (GCE07 + EG5) and GCE08 + NR1; Asp¹³³-Ala, (GCE09 + EG5) and (GCE10 + NR1); Pro¹³⁴-Ala, (GCE11 + EG5) and (GCE12 + NR1). Oligonucleotide NR1 and EG5 were used to splice together the two component fragments of each mutant to produce the point substituted

15 cDNAs. The sequence of the oligonucleotides used and their positions of hybridisation with the Fc_γRIIaNR cDNA are: NR1 and EG5 as described above;

GBC01, 5'-GAAGGACAAGGCTCTGGTCAAG-3', (nucleotide position 443-464);

20 GBC02, 5'-CTTGACCAGAGCCTTGTCCTTC-3', (443-464);
GBC03, 5'-CTGGAAGGACGCTCCTCTGGTC-3', (440-461);
GBC04, 5'-GACCAGAGGAGCGTCCTTCCAG-3', (440-461);
GBC05, 5'-GGACAAGCCTGCTGTCAAGGTC-3', (446-467);
GBC06, 5'-GACCTTGACAGCAGGCTTGTC-3', (446-467);

25 GBC07, 5'-GACAAGCCTCTGGCTAAGGTCAC-3', (447-469);
GBC08, 5'-GTGACCTTAGCCAGAGGCTTGTC-3', (447-469);
GCE01, 5'-CCCAGAAAGCTTCCCCTTGG-3', (490-611);
GCE02, 5'-CCAAACGGGAAGCTTCTGGG-3', (490-611);
GCE03, 5'-CAGAAATTCGCTCGTTGGATC-3', (492-614);

30 GCE04, 5'-GATCCAAACGAGCGAATTTCTG-3', (492-614);
GCE05, 5'-GAAATTCCTCCGCTTGGATCCC-3', (494-616);
GCE06, 5'-GGGATCCAAAGCGGAGAATTC-3', (494-616);
GCE07, 5'-ATTCTCCCCTGCTGATCCCACC-3', (497-619);
GCE08, 5'-GGTGGGATCAGCACGGGAGAAT-3', (497-619);

35 GCE09, 5'-CTCCCCTTGGCTCCCACCTTC-3', (500-622);
GCE10, 5'-GAAGGTGGGAGCCAAACGGGAG-3', (500-622);

- 37 -

GCE11, 5'-CCGTTTGGATGCTACCTTCTCC-3', (503-625);
GCE12, 5'-GGAGAAGGTAGCATCCAACGG-3', (503-625).

The Ala codon or its complement are shown in bold type.

Chimeric and mutant receptor cDNA expression
5 constructs were produced by subcloning the cDNAs into the
eukaryotic expression vector pKC3 (29). Each cDNA was
engineered in the PCR reactions to have an EcoRI site at
their 5' end (the 5'-flanking oligonucleotide primer NR1
containing an EcoRI recognition site), and a Sali site at
10 their 3' end (the 3'-flanking oligonucleotide primer EG5,
containing a Sali recognition site), which enabled the
cDNAs to be cloned into the EcoRI and Sali sites of pKC3.
The nucleotide sequence integrities of the chimeric cDNAs
were determined by dideoxynucleotide chain-termination
15 sequencing (30) using Sequenase™ (United States
Biochemical Corp., Cleveland, OH) as described (31).

Transfections-COS-7 cells (30-50% confluent per
5cm² Petri-dish) were transiently transfected with FcR cDNA
expression constructs by the DEAE-dextran method (32).
20 Cells were incubated with a transfection mixture (1ml/5cm²
dish) consisting of 5-10mg/ml DNA, 0.4mg/ml DEAE-dextran
(Pharmacia, Uppsala, Sweden) and 1mM chloroquine (Sigma, St
Louis, Mo) in Dulbecco's Modified Eagles Medium (DME) (Flow
Laboratories, Australia) containing 10% (v:v) Nuserum (Flow
25 Laboratories, Australia), for 4hr. The transfection
mixture was then removed, cells treated with 10% (v:v)
dimethylsulphoxide in Phosphate buffered saline (PBS, 7.6mM
Na₂HPO₄/3.25mM NaH₂PO₄/145mM NaCl) pH7.4 for 2 min, washed
and returned to fully supplemented culture medium for 48-72
30 hr before use in assays. COS-7 cells were maintained in
DME supplemented with 10% (v:v) heat inactivated foetal
calf serum, 100U/ml penicillin, 100mg/ml streptomycin, 2mM
glutamine (Commonwealth Serum Laboratories, Australia) and
0.05mM-2-mercaptoethanol (2mE) (Kock Light Ltd., UK).

- 38 -

Monoclonal antibodies and Ig reagents - The anti-Fc_γR1I mAb 8.2 was produced in this laboratory (19). The mouse IgE anti-TNP mAb (TIB142) was produced from a hybridoma cell line obtained from the American Type Culture Collection (Rockville, Ma); the mouse IgG1 anti-TNP mAb (A3) was produced from a hybridoma cell line which was a gift of Dr A Lopez (33). Human IgG1 myeloma protein was purified from the serum of a myeloma patient as described (34). Human IgG1 oligomers were prepared by chemical crosslinking using S-acetylmercaptosuccinic anhydride (SAMSA) (Sigma, St Louis, Mo) and N-Succinimidyl 3-(2-pyridyldithio) propionate (SPDP) (Pierce Chemical Company, Rockford, IL) as follows: hIgG1 myeloma protein (5mg at 10mg/ml) in phosphate buffer (0.01M sodium phosphate pH 7.5/0.15M NaCl) was treated with a 5-fold molar excess of SPDP in dioxane, for 30 min. Excess reagents were removed by dialysis into PBS pH 7.0 / 2mM EDTA. The SAMSA modified hIgG1 was treated with 200ml hydroxylamine (1mM in PBS pH 7.0) for 30 min, then mixed with SPDP modified hIgG1 (1:1 molar ratio) and incubated for a further hr. The reaction was terminated with N-ethylmaleimide (Sigma, St Louis, Mo) added to a final concentration of 6.6mM (35). All reactions were performed at room temperature. Dimeric hIgG1 was purified from monomeric and oligomeric hIgG1 by size fractionation chromatography on Sephacryl S-300 HR (Pharmacia LKB Biotechnology).

Erythrocyte-Antibody rosetting - COS-7 cell monolayers transfected with FcR expression constructs were incubated with EA complexes, prepared by coating sheep-red blood cells (SRBC) with trinitrobenzene sulphonate (TNBS) (Fluka Chemika, Switzerland) and then sensitising these cells with mouse IgG1 or IgE anti-TNBS mAb (36). Two ml of 2% EAs (v:v) were added per 5cm² dish of transfected cells and incubated for 5 minutes at 37°C. Plates were then centrifuged at 500g for 3 min and placed on ice for 30 min. Unbound EA were removed by washing with L-15 medium modified with glutamine (Flow Laboratories, Australia) and

- 39 -

containing 0.5% Bovine serum albumin (BSA).

Direct binding of dimeric-hIgG1 or dimeric-mIgG1 - COS-7 cells transfected with FcR expression constructs were harvested, washed in PBS/0.5% BSA and resuspended at 107/ml in L-15 medium/0.5% BSA. 50ml of cells were incubated with 50ml serial dilutions of ¹²⁵I-dimeric-hIgG1 for 120 min at 4°C. ¹²⁵I-dimeric-Ig was prepared by the chloramine-T method as described (37) and shown to compete equally with unlabelled dimeric-Ig in binding to Fc receptor expressing COS-7 cells. Cell bound ¹²⁵I-dimeric-IgG1 was determined following centrifugation of cells through a 3:2 (v:v) mixture of dibutylphthalate and dioctylphthalate oils (Fluka Chemika, Switzerland) and cell bound ¹²⁵I-dimer determined. Non-specific dimer binding was determined by assaying on mock transfected cells and subtracted from total binding to give specific dimeric-IgG1 bound. Levels of cell surface Fc_γRII expression were determined using the anti-Fc_γRII mAb 8.2, shown to bind distantly to the binding site (19), and used to correct for variable cell surface receptor expression between the mutant Fc_γRII COS-7 cell transfectants. The binding of 8.2 was determined in a direct binding assay as described for the human IgG1-dimer binding assays.

RESULTS

Chimeric receptors identify multiple regions of Fc_γRII involved in IgG binding.

In order to determine the roles of domain 1 and the B-C or C'-E loop regions of domain 2 in the binding of IgG by human Fc_γRII, chimeric receptors were generated whereby each of these regions in Fc_γRII were replaced with the equivalent regions of the human Fc_γRI a chain. Chimeric receptor cDNAs were constructed by SOE PCR, subcloned into the eukaryotic expression vector pKC3 and transiently transfected into COS-7 cells. The IgG binding capacities of the chimeric receptors were determined by both EA rosetting and the direct binding of dimeric hIgG1.

- 40 -

The substitution of Fc_γRII domain 1 with that of the Fc_γRI α chain produced a receptor (designated D1_γD2_γ) which as expected retained the capacity to bind the highly sensitised IgG-EA complexes (Fig. 1a), however in contrast to the wild-type receptor did not bind dimeric-hIgG1 (Fig. 2). Similarly, the replacement of the region of the Fc_γRI α chain comprising residues Ser¹⁰⁹-Val¹¹⁶ (B-C loop) or Ser¹³⁰-Thr¹³⁵ (C'-E loop) of Fc_γRII domain 2 with the equivalent regions of the Fc_γRI α chain (producing chimeras γ109-116ε and γ130-135ε respectively), also resulted in the loss of hIgG1-dimer binding (Fig. 2), yet these receptors retained the ability to bind IgG-EA complexes (Fig. 1b,c). COS-7 cells transfected with an expressible form of the Fc_γRI α chain (17) did not bind either hIgG1 dimers or IgG-EA (Fig. 1d, Fig. 2). Thus the ability of chimeric Fc_γRII containing domain 1 or B-C, C'-E domain 2 substitutions to bind the highly substituted EA complexes but not dimeric-hIgG1, suggests that these receptors bind IgG with a lower affinity than wild-type Fc_γRII. These findings demonstrate that although the domain 1 and domain 2 B-C, C'-E regions do not seem to directly bind IgG, they do appear to make a contribution to the binding of IgG by Fc_γRII.

Fine structure analysis of the B-C and C'-E loops of Fc_γRII domain 2.

The contribution of the B-C and C'-E loop regions of Fc_γRII to the binding of IgG was determined using a point mutagenesis strategy where individual residues in both the B-C (residues Lys¹¹³-Val¹¹⁶) and C'-E (residues Phe¹²⁹-Pro¹³⁴) loops were replaced with alanine. cDNAs encoding the mutant receptors were also generated using SOE PCR and subcloned into the eukaryotic expression vector pRC3. The resultant expression constructs were transiently transfected into COS-7 cells and the Ig binding capacity of the mutant receptors determined by assessing the binding of dimeric hIgG1. The levels of cell membrane expression of the mutants on the COS-7 cell transfectants were determined

- 41 -

using the anti-Fc_γR_{II} mAb 8.2 (shown to detect an epitope distant to the binding site) and were comparable to the of the wild-type receptor (see legend Fig. 3). The relative capacity of the mutant receptors to bind hIgG1 were
5 determined using the direct binding assay following correction for variation in cell surface expression levels, and expressed as percentage of wild-type Fc_γR_{II} binding.

The replacement of the B-C loop residues (Lys¹¹³, Val¹¹⁴, Leu¹¹⁵, Pro¹¹⁶) in turn with Ala, in each case
10 resulted in diminished hIgG1-dimer binding (Fig. 3). The most dramatic effect was seen on substitution of Lys¹¹³ and Leu¹¹⁵, which exhibited only 15.9 + 3.4 (mean + SD) and 20.6 + 4.0 percent binding compared to wild-type Fc_γR_{II}. The replacement of Val¹¹⁴ or Pro¹¹⁵ with Ala had a lesser effect,
15 these receptors displaying 53.5 + 13.5 and 73.5 + 7.9 percent wild-type binding respectively. These results suggest that each of these residues in the B-C loop contribute to the binding of IgG by Fc_γR_{II}, whether as direct contact residues or indirectly by maintaining the
20 correct conformation of the binding site. Alanine replacement of residues 129 to 134 of the C'-E loop (Phe¹²⁹, Ser¹³⁰, Arg/His¹³¹, Leu¹³², Asp¹³³, Pro¹³⁴) also suggests this region plays a role in the binding of IgG by Fc_γR_{II}. Substitution of Phe¹²⁹ and Arg/His¹³¹ decreased hIgG1-dimer
25 binding by over 90% and 80% respectively to 8.2+ 4.4 and 21.9 + 3.9 compared to that of wild-type Fc_γR_{II} (Fig. 3). In contrast, replacement of residues Asp¹³³ and Pro¹³⁴ increased binding to 113.5 + 8.8 and 133.5 + 0.2 percent of the wild-type receptor. The substitution of Ser¹³⁰ or Leu¹³²
30 had no significant effect on the binding of hIgG1, as these mutants exhibited comparable binding to wild-type Fc_γR_{II} (Fig. 3). These findings suggest Phe¹²⁹ and Arg/His¹³¹ may play an important role in the binding of hIgG1, and the observation that the substitution of Asp¹³³ and Pro¹³⁴
35 increase binding also suggest an important role for these residues, which appears different from Phe¹²⁹ and Arg/His¹³¹. Again, a distinction between a possible direct binding role

- 42 -

or contribution to structural integrity of the receptor cannot be made, however these findings clearly identify both the B-C and C'-E loops as playing a role in the binding of IgG by Fc_γR_{II}. The positions of the residues proposed to have binding roles on the putative domain 2 model suggests that it is the region of the B-C-C'-E-F-G face forming the interface with domain 1 that is involved in the contact of Fc_γR_{II} with IgG (Fig. 4).

DISCUSSION

The findings presented herein provide evidence to suggest that the interaction of IgG with hFc_γR_{II} involves multiple regions of the receptor. Of the entire extracellular region, only the 154-161 segment was demonstrated to directly bind IgG, since insertion of only this region into the corresponding region of the human Fc_γR_I a chain, imparted IgG binding function to Fc_γR_I. Moreover, replacement of this region in Fc_γR_{II} with that of Fc_γR_{Ia} resulted in loss of IgG binding, implying that residues Asn¹⁵⁴ to Ser¹⁶¹ of Fc_γR_{II} comprises the key IgG1 interactive site of hFc_γR_{II}. However, the generation of further chimeric hFc_γR_{II}/Fc_γR_{Ia} receptors as described in this application has suggested that two additional regions of hFc_γR_{II} domain 2, although not directly capable of binding IgG, also influence the binding of IgG by hFc_γR_{II}. The replacement of the regions encompassing Ser¹⁰⁹ to Val¹¹⁶ (B-C loop) and Phe¹²⁹ to Pro¹³⁴ (C'-E loop) of hFc_γR_{II} with the equivalent regions of the Fc_γR_I a chain, produced receptors which despite containing the putative binding site (Asn¹⁵⁴ to Ser¹⁶¹) and retaining the ability to bind IgG-EA, lost the capacity to bind dimeric hIgG1. Indeed, site-directed mutagenesis performed on each individual residue of the 109-116 and 129-134 regions identified a number of residues which appear to play crucial roles in hIgG1 binding by Fc_γR_{II}. The replacement of Lys¹¹³, Pro¹¹⁴, Leu¹¹⁵ and Val¹¹⁶ of the B-C loop, and Phe¹²⁹ and Arg/His¹³¹ of the C'-E loop with alanine, all resulted in diminished

- 43 -

hIgG1 binding. Therefore, these findings provide strong evidence to suggest that the B-C and C'-E loops of hFc_γR11 also contribute to the binding of IgG.

5 The findings described herein suggest the nature of the residue at 131 plays a role in the binding of hIgG1, as replacement with alanine results in a marked reduction in binding of this isotype to hFc_γR11. Thus, although the F-G loop of hFc_γR11 is clearly the major region involved in the direct interaction with IgG, as demonstrated in that 10 only this region has been definitively shown to directly bind IgG (20), residue 131 also appears to play a binding role.

The molecular model of the entire F_{cγ}R11 shows that the regions involved in Ig binding are located on the 15 same face of domain 2 and at the interface between domains 1 and 2. Furthermore, this also indicates that the A/B and E/F loops of domain 1 as well as the strand connecting domains 1 and 2 (G/A strand) are located in the same region (interdomain interface) and contribute to the binding area 20 of the domain. This area forms a hydrophobic pocket and development of receptor antagonists would be targeted at this region.

Furthermore since F_{cγ}R11 and F_{cγ}R1 as well as other F_cR are homologous then their overall structure and 25 general principles of the location of the binding sites would be similar to that disclosed in this application.

The studies described herein demonstrate that domain 1 of hFc_γR11, although does not appear to play a direct role in IgG binding, does play an important role in 30 the affinity of IgG binding by hFc_γR11. This is suggested as replacement of domain 1 of hFc_γR11 with domain 1 of hFc_γeR1, reduced the capacity to bind IgG, as shown by the failure of this receptor to bind dimeric hIgG1. These data imply that the IgG binding role of domain 1 is likely to be 35 an influence on receptor conformation, stabilizing the structure of domain 2 to enable efficient IgG binding by hFc_γR11. This proposal is consistent with the localisation

- 44 -

of the IgG binding site of hFc_γR_{II} to loop regions in domain 2 at the interface with domain 1. The binding site is therefore in close proximity to domain 1 and as such predicted to be influenced in conformation, presumably by the loop and strand region at the bottom of domain 1 i.e. G strand, and the A-B, E-F and C'-C loops.

Further support for the involvement of the B-C and C'-E loops of hFc_γR_{II} domain 2 in the binding of IgG has been provided in the cloning and subsequent Ig binding studies of rat Fc_γR_{III} (38), which is structurally and functionally homologous to Fc_γR_{II}. Two rat Fc_γR_{III} isoforms, IIIA and IIIH, which have extensive amino acid differences in their second extracellular domains, have been shown to bind rat and mouse IgG subclasses differently. Both isoforms bind rtIgG1 rtIgG2b and mIgG1, however differ in that only the IIIH form binds rtIgG2b and mIgG2b. Significantly, the amino acid differences between rat Fc_γR_{IIIA} and IIIH isoforms are situated predominantly in the predicted B-C and C'-E loops of domain 2 (Fig. 5). However, it should be noted that the F-G loop regions of rat Fc_γR_{IIIA} and IIIH are almost totally conserved, which together with the observation that both forms bind rtIgG1 rtIgG2a and mIgG1, is consistent with the proposal that the F-G loop region is the major IgG interactive region, and that the B-C and C'-E loop regions provide supporting binding roles.

It is interesting to note that a number of parallels are also apparent in the molecular basis of the interaction of hFc_γR_{II} with IgG and that of hFc_γR_I with IgE. The Ig binding roles of the two extracellular domains of hFc_γR_I are similar to hFc_γR_{II}, with domain 2 responsible for the direct binding of IgE and domain 1 playing a supporting structural role (17,26). Furthermore, as described for hFc_γR_{II}, we have also identified multiple IgE binding regions in domain 2 of hFc_γR_I. Using chimeric hFc_γR_{II}/Fc_γR_I receptors we have demonstrated that domain 2 of hFc_γR_I contains at least 3 regions each capable of

- 45 -

directly binding IgE, as the introduction of the Fc_γRI regions encompassed by residues Trp⁹⁷ to Lys¹²⁰, Tyr¹²² to Asp¹²⁵ and Lys¹⁵⁴ to Gln¹⁶¹ into the corresponding regions of hFc_γR2 was found to impart IgE binding to hFc_γRI (17, 20). These data suggest at least 4 regions of hFc_γRI domain 2 contribute to the binding of IgE, Ser⁹³ to Phe¹⁰⁴, Arg¹¹¹ to Glu¹²⁵, Tyr¹²² to Asp¹²⁵ and Lys¹⁵⁴ to Ile¹⁶¹. Three of these regions correspond to the 3 regions identified herein as important in the binding of IgG by Fc_γR2, Arg¹¹¹ to Glu¹²⁵, Tyr¹²² to Asp¹²⁵ and Lys¹⁵⁴ to Ile¹⁶¹, which encompass the B-C, C'-E and F-G loops respectively. Thus, as described herein for hFc_γR2, these findings implicate the B-C, C'-E and F-G loops juxtaposed in domain 2 at the domain 1 interface, as the crucial IgE interactive region of hFc_γRI.

EXAMPLE 2 Characterisation of Domain 2 of Fc_γR2

MATERIALS AND METHODS

Mutants were constructed and constructs used to transfect COS cells as in Example 1.

RESULTS AND DISCUSSION

Additional mutants of domain 2 of Fc_γR2 were made. Three point mutations where a single amino acid residue was changed to alanine were constructed. The mutant cDNAs were used to transfect COS cells and tested for the ability of the proteins encoded by the mutants to bind human IgG1 dimers. Mutations at Asn¹²³ and Gly¹²⁴ has no effect on binding whereas mutation at Lys¹²⁵ was found to decrease binding (data not shown). The amino acid residues tested are found in the space between the C' and the C loops. The results indicate that the 123 and 124 positions do not contribute to binding site and that the 125 position is involved in binding.

- 46 -

Construction of C' - C hFcγRII Ala point mutant cDNAs

Asn¹²³-Ala, CC-01 + EG5 and CC-02 + NR1
 Gly¹²⁴-Ala, CC-03 + EG5 and CC-04 + NR1
 Lys¹²⁵-Ala, CC-05 + EG5 and CC-06 + NR1

5 Oligonucleotide sequences and their positions of hybridization with the FcγRII a^{NR} cDNA are as follows:

CC-01, 5'-CATTCTTCCAGGCAGGAAAATCCCAG-3', (nucleotide position 467-498);
 CC-02 5'-CTGGGATTTTCCTGCCTGGAAGAATG-3', (467-494)
 10 CC-03 5'-CTTCCAGAATGCAAAAATCCCAGAAATTC-3', (473-500);
 CC-04 5'-GAATTTCTGGGATTTTGCATTCTGGAAG-3', (473-500);
 CC-05 5' -CCAGAATGGAGCATCCCAGAAATTC-3', (476-500);
 CC-06 5' -GAATTTCTGGGATGCTCCATTCTGG-3', (476-500).

EXAMPLE 3 Comparison of the binding of human IgG1 and IgG2 to the Alanine mutants of FcγRII

15 The binding of human IgG2 was also assessed and some similarities and differences in the nature of mutations that affect binding of IgG1 or IgG2 were observed (Fig.7).

20 Mutations of Lys¹¹³, Pro¹¹⁴, Leu¹¹⁵, Phe¹¹⁹, His¹²¹, I¹⁵⁵, G¹⁵⁶ decrease IgG1 and IgG2 binding.

Mutation of Val¹¹⁶ decreases IgG1 binding only.

Mutation of Ser¹³⁰, Leu¹³², Asp¹³³, Pro¹³⁴, Tyr¹⁵⁷ reduces IgG2 binding only.

25 Mutation of Thr¹⁵⁸ and Leu¹⁵⁹ also enhances IgG1 and IgG2 binding.

EXAMPLE 4 The IgE Binding Site of Fc_εRI

30 Similar experiments to those described for the IgG receptor Fc_γRII were performed on the IgE receptor, Fc_εRI.

Three regions of the IgE receptor were the target of mutagenesis experiments. These regions defined by

- 47 -

residues 112 to 116, 129 to 134 and 154 to 161 are located in the second domain of Fc_γRI. The experiments were performed wherein individual amino acid residues were mutated to alanine and the effect on IgE binding measured. Mutation of the Fc_γRI was performed by splice overlap extension on described for the Fc_γR_{II} using the oligonucleotides shown in Fig. 5.

Mutation of Tyr¹³¹ or Glu¹³² profoundly decreased the capacity of Fc_γRI to bind IgE (Fig. 6). By contrast mutation of Trp¹³⁰ resulted in enhancement or improvement of IgE binding by Fc_γRI.

Mutation of the residues in the segment from (and including) residue 154-161 also showed that mutation of Val¹⁵⁵ completely ablated binding and mutation of Leu¹⁵⁸ or Asp¹⁵⁹ also decreased IgE binding. Furthermore mutation of Trp¹⁵⁶, Tyr¹⁶⁰ or Glu¹⁶¹ enhanced IgE binding to Fc_γRI. Since domain 1 is also involved in Ig binding and since we have developed a molecular model of Fc_γR_{II} and since we know Fc_γR_{II} and Fc_γRI are highly related proteins it is likely that similar regions of Fc_γRI domain 1 to those of Fc_γR_{II} will be involved in binding i.e. in Fc_γRI the, A/B loop residues Asn¹⁰ - Asn²¹, C/C' loop, residues Asn⁴² - Glu⁴⁷ and the E/F loop residues Lys⁵⁹ - Asp⁶².

On the basis of these studies it is clear that certain residues have a major role in Fc_γR interaction and that manipulation of these residues would be useful in the production of useful pharmaceutical or diagnostic reagents. Thus mutation of Tyr¹³¹, Glu¹³², Val¹⁵⁵, Leu¹⁵⁸, Asp¹⁵⁹ all decrease IgE binding. Conversely mutation of Trp¹³⁰, Trp¹⁵⁶, Tyr¹⁶⁰ or Glu¹⁶¹ all improve Fc_γRI function since these mutant receptors are able to bind IgE more effectively than the wild type receptor.

EXAMPLE 5 Effect of Chimeric Receptors on IgE Binding
MATERIALS AND METHODS

Chimeric receptors were made as described in Example 1. Chimeric receptors were produced which have

- 48 -

Domain 2 of the FcεRII but have varying components in Domain 1. The terminology is as follows:

- εεγ : denotes a receptor with Domains 1 & 2 from FcεRII and a transmembrane region from FcγRII. This was used as a control.
- 5 γεγ : denotes a receptor with Domain 1 from FcγRII, Domain 2 from FcεRII and a transmembrane region from FcγRII.
- 10 G : denotes γεγ which contains the G strand from FcεRI
- EF : denotes γεγ which contains the E/F loop from FcεRI
- 15 CC' : denotes γεγ which contains the CC' loop from FcεRI

The oligonucleotides used to create the above chimeric receptors were as follows :

	CC'	NR1	+	LR3
		LR4	+	EG5
20	EF	NR1	+	EG32
		EG33	+	EG5
	G	NR1	+	LR1
		LR2	+	EG5

NR1 and EG5 are as described in Example 1.

25	Antisense LR1	5' - GGTTCACTGAGGCTGGTCTGGC-3'
	Sense LR2	5' - CAGCCTCAGTGAACCTGTGTACC-3'
	Antisense LR3	5' - CGTCTCTTCTGACAGGCTGCCATTGTGGAACCAC-3'
	Sense LR4	5' - GTCAGAAGAGACGAATTCACCCAGCTACAGGTCC-3'
	Antisense EG32	5' - AAATTGGCATTACAATATCAAGCTGGGCTCCGTGTGG-3'
30	Sense EG33	5' - AATATTGTGAATGCCAAATTTGAAGACAGCGGGGAGTACAC-3'

- 49 -

The efficiency of binding of the chimeric receptors to IgE was assayed using IgE coated erythrocytes on monolayers of COS cells transfected with cDNA encoding the constructs described directly above. Radiolabelled Fc portion of IgE was used in the study of the chimeric receptors.

RESULTS & DISCUSSION

The results of the rosetting assay showed that the cells transfected with the CC' chimeric construct rosette less well (data not shown) than the other transfectants.

The chimeric receptors were subjected to a quantitative assay using radiolabelled Fc portion of IgE (see Figure 8). The chimeric receptor $\gamma\epsilon\gamma$ restores binding to the same level as that seen in the normal receptor ($\epsilon\epsilon\gamma$ in this case). This implies that the EF and the G regions are important in binding in Fc ϵ R11.

EXAMPLE 6 Production of a soluble polypeptide with Fc binding ability and production of the Fc γ R11 Fusion Protein

Two examples of the genetically engineered polypeptide of the invention are recombinant soluble Fc γ R11 (which consists only of the extracellular domains of Fc γ R11) and a fusion protein consisting of human serum albumin genetically fused to the extracellular domains of Fc γ R11.

The recombinant soluble Fc receptor (rec. sFc γ R11) can be generated using standard mutagenesis techniques including splice overlap extension (SOE) as described earlier. The Fc γ R11cDNA or genomic DNA or a combination thereof is mutated such that a translation termination codon (e.g. TAA, TGA OR TAG) is inserted into the DNA in a position that will terminate the translation of RNA derived from such mutant DNA to yield proteins containing the Ig binding extracellular region without the

- 50 -

transmembrane anchoring segment.

Thus a molecule was generated by using SOE to introduce the codon, TAG, 3' of the residue 170. This mutated DNA was introduced into several expression systems and a polypeptide with Fc binding ability was obtained. The expression systems included CHO cells, fibroblasts, a yeast (*Pichia pastoris*) and baculovirus. The molecular weight of the rec.sFcγRII varies according to the expression system, ie. 30 KD from CHO cells or 26 KD from *Pichia pastoris*. This is due to differences in glycosylation. Clearly many other expression systems could be used including bacteria, plants and mammals.

The second example of a polypeptide of the present invention is a fusion protein which is produced by fusing DNA encoding a polypeptide with Fc binding ability to DNA encoding a different protein to generate a new protein which retains Fc binding ability. Such new protein would include human serum albumin fused to FcγRII. This protein can be generated using SOE to fuse the DNA encoding HSA to FcγRII. This is done in such a way that the residues near the C terminus of HSA are fused to amino acid residues in the amino terminus of FcγRII. It is important to note that although in this example FcγRII encoding DNA is used in the fusion protein, it is also possible to use DNA encoding other proteins such as the DNA encoding the Fc receptor-like molecules described earlier.

MATERIALS & METHODS

The HSA:FcγRII fusion protein was produced according to the following method. Oligonucleotides HT4 and HT7 were used to amplify the HSA DNA. HT4 contains the restriction site (Eco RI) for cloning and HT7 contains a sequence that overlaps with FcγRII. The sequences are as follows:

HT4 5' ATCGATGAATTCATGAAGAAGTGGTGGGTAAC 3'

HT7 5' GGGGGAGC/GCCTAAGGCAGCTTGAC 3'

- 51 -

The Eco RI restriction site is shown in bold in HT4 above. Just adjacent to this is the ATG which is the HSA start codon. A slash in the HT7 sequence shown above denotes the Fc γ RII-HSA junction.

5 Oligonucleotides HT8 and HT5 were used to amplify the required segment (extracellular domains) of Fc γ RII. HT8 contains a sequence that overlaps with the HSA sequence (and also oligonucleotide HT7). HT5 also contains a translation termination codon as well as a restriction site
10 (Eco RI) for cloning purposes. The sequences of the oligonucleotides are as follows :

HT8 5'S CCTTAGGC/GCTCCCCCAAAGGCTG 3'

HT5 5' CCCCATCATGAATTCCTATTGGACAGTGATG 3'

The slash in the HT8 sequence shown above denotes
15 the junction between HSA and Fc γ RII encoding DNA. The Eco RI site in HT5 is denoted by bold type. The termination codon, CTA is adjacent to the Eco RI site. Note that HT7 and HT5 are antisense sequences.

The constructs made were used to transform *Pichia*
20 *pastoris* cells. Western blots of the proteins expressed were conducted.

RESULTS & DISCUSSION

A Western blot was performed using a polyclonal anti-Fc γ RII antibody. The supernatants from the
25 transformed yeasts were tested with the antibody and the results demonstrated that only the supernatants from HSA:Fc γ RII transfected cells and the cell transfected with a construct encoding soluble Fc γ RII reacted with the antibody. The controls did not react (results not shown).

30 The Western blotting detected a protein of approximately 100KD which is of the expected molecular weight being 67KD from HSA plus 30kD from Fc γ RII extracellular domains. A recombinant Fc γ RII of 30kD was also detected by the antibody.

- 52 -

The 100KD protein produced bound to immunoglobulin coated beads but not to Fab'2 coated beads indicating that it has specificity for the Fc portion of IgG. In addition sequencing of the SOE produce confirmed the predicted sequence of the fusion protein as shown in Fig. 12.

It is clear that FcγR extracellular domains can be attached to additional molecules and still retain Fc receptor activity. Since there are a number of Fc receptors closely related to the FcγRII, especially in their Ig binding extracellular regions, it is clear that modifications of the type described for FcγRII would also be possible for these other Fc receptors such as FcγRI, FcεRI, FcγRIII and FcαRI. This appears to be particularly the case when the receptors mentioned immediately above have essentially the same number of amino acids in the extracellular regions. In addition the FcεRI, FcγRII, FcαRI and FcεRIII all have extracellular regions that are organised into two di-sulphide bonded domains that are members of the immunoglobulin super family. Furthermore, the ligands for FcγRII, FcγRIII, FcεRI and FcαRI are all homologous.

It is also clear that the non-Fc binding portion of the fusion protein may be attached to the other species receptors discussed above. The "foreign" component of the fusion protein may be an immunoglobulin provided that the immunoglobulin would be a type unable to bind the Fc binding portion of the fusion peptide. For example, the extracellular portion of FcγRII could be attached to IgM or the extracellular portion of FcεRI could be attached to IgG. Other foreign protein components could include ovalbumin, other Fc receptors, compliment, other recombinant derived proteins including CD46, CD59, DAF, CRI, CR3 and proteins especially those involved in regulating inflammation including cytokines and complement regulating proteins. The receptor could also be attached to other high molecular weight entities.

- 53 -

Although the above experiments contemplate production of polypeptides according to the invention via recombinant means it is also possible that polypeptides according to the invention could be generated by other non-
5 recombinant means. This could be achieved by chemical means such as attaching the Fc binding portion of the protein to other molecules such as dextrans, lipids, and carbohydrates with the proviso that the molecules produced retain Fc binding ability.

10 Figure 9 shows that HSA-Fc γ RII is specific for immunoglobulin, and that the fusion protein is correctly folded since the epitopes detected by the monoclonal antireceptor antibodies are intact. It also demonstrates that HSA-Fc γ RII binds mouse IgG1 (μ 1), IgG2b (γ 2b) and
15 human IgG (HAGG) but it does not bind IgG lacking an Fc portion (1302).

EXAMPLE 7 HSA:Fc γ RII administered to an animal.

Figure 10a depicts curves showing the clearance of the HSA:Fc γ RII fusion protein from the blood of mice.
20 The animals were injected with either HSA:Fc γ RII fusion protein or soluble Fc γ RII and the disappearance from the circulation measured. The conclusions are that the half life of the receptor Fc γ RII is approximately 40 minutes whilst that of HSA:Fc γ RII is 140 minutes. Also the
25 HSA:Fc γ RII persists for many hours, eg. 9% of the dose was present after 8 hours and 7% at 24 hours. In contrast, all the soluble Fc γ RII was excreted.

The appearance of any receptor or fusion protein in urine was monitored (Fig. 10b). The soluble Fc γ RII
30 appeared very rapidly whereas there was no detectable fusion protein in the urine, ie. this was not excreted.

EXAMPLE 8 Method of Removing Immunoglobulin From a Sample

The FcR or a mutant or fusion protein thereof is
35 attached to a solid support. When this method is used in

- 54 -

plasmaphoresis the solid support will be a membrane or the like. The substrate may be silica such as in this Example. Human albumin (native) and HSA:Fc γ R11 were coupled to silica beads in two separate preparations.

5 The coupling of the protein to produce a reagent in accordance with the present invention may be achieved by standard methods. In the present Example the hydroxyl groups on the silica beads were replaced by amino groups via an exchange reaction with 3-aminopropyltriethoxysilane
10 (APTS). This activates the silica beads. The protein was mixed with a carbodiimide (such as EDC) and added to the activated silica beads. Carboxyl groups on the protein combine with the carbodiimide to form an O-acylisourea derivative which in turn reacts with the amino groups on
15 the silica beads to form an amide with elimination of the urea derivative.

In a different version of preparing the reagent, the protein and carbodiimide were reacted in the presence of N-hydroxysuccinimide to form a more stable amino-
20 reactive intermediate. β -mercaptoethanol was added to quench the unreacted carbodiimide. The protein succinimide derivative was then added to the activated silica beads.

The preparation of human albumin attached to silica and HSA:Fc γ R11 attached to silica was carried out as
25 follows:

50 mg NH₂-silica beads
0.9 mg of HSA OR HSA-Fc γ R11
30 mg of EDC
in mPBS pH6 (4ml) incubated o/n at 4°C

- 55 -

Table 2In 2 parallel tubes with HSA (plus ¹²⁵I HSA)

		3 washes mPBS (pH 7.4)	3 washes 0.1m NaHCO ₃ (pH 8.3)
5	+EDC	85% bound	72% bound
	-EDC	30% bound	14% bound

Table 2 shows that after conjugation of HSA to silica (measured by the use of tracer labelled HSA in mixture), three washes with NaHCO₃ were required to remove non-specifically bound material.

EXAMPLE 9 Ability of HSA:FcγRII to Bind Immune Complexes

MATERIALS & METHODS

Similar to Example 7. Each tube 2μg of silica matrix conjugated with either 1.8μg of the HSA:FcγRII fusion protein or HSA in a volume of 1ml of PBS and 0.5% BSA. Three hundred nanograms of either iodinated HAGG or monomeric IgG was added. Additional controls included tubes with no silica to determine non-specific depletion. Samples were taken at the indicated time points and the quantity of label HAGG or monomeric Ig remaining in the supernatant after removal of silica beads was determined.

In this Example the ability of one of the proteins of the present invention, HSA:FcγRII to bind immune complexes as represented by HAGG is illustrated.

The ability of the proteins of the present invention to bind one form of immunoglobulin and not another form has important therapeutic implications. The proteins of the present invention have been found to specifically bind immunoglobulin complex as opposed to monomeric Ig.

The binding of immune complexes in the form of HAGG was to HSA:FcγRII was tested. These results are

- 56 -

described in Table 3.

Table 3

	<u>Support</u>	<u>Tracer Ligand</u>	<u>% Ligand</u>	<u>Bound*</u>
	HSA-FcγRI	Hagg	35.5	37.5
5	HSA	Hagg	4.0	5.4

*bound after overnight at 4°C PBS+0.5 BSA

Table 3 describes the binding of immune complexes in the form of aggregated Ig (HAGG) to the HSA:FcγRIIa fusion protein but not to HSA on silica.

10 The interaction of HAGG with HSA:FcγRII was studied. This is shown in Figure 11.

The results shown in Figure 11 indicate that there is a clear difference in the binding of labelled HAGG to HSA:FcγRII compared to binding to HSA. In addition they
 15 show that as the concentration of unlabelled competitor HAGG is added, the binding of labelled HAGG is progressively inhibited to the level seen in HSA-silica.

EXAMPLE 10 Immune Complex Assay

20 The polypeptides of the present invention are useful in detecting the presence of immune complexes. In this example it is clear that the polypeptides of the present invention can be used to detect immune complexes and that certain modifications may be made to optimise the assays.

25 Two approaches are used in the development of the immune complex assays. The first utilises recombinant soluble (rec.sFcγRII) in combination with anti-Fc receptor antibodies. The second approach uses the HSA fusion protein.

30 The assays described in this example use an ELISA format but the principles apply to any format such as chemiluminescence, biosensor, agglutination, etc.

- 57 -

MATERIALS AND METHODS**IMMUNE COMPLEX ASSAY (ICA)****Coating Microtitre Stripwells with 8.26 Monoclonal Antibody**

8.26 monoclonal antibody (mAb) diluted to 5 µg/ml
5 in carbonate buffer pH 10.0. Aliquot 50 µl volumes of
diluted 8.26 mAb were placed into Nunc maxisorp microtitre
stripwells and incubated at 4°C for 12 hours. 8.26 mAb
coated microtitre stripwells are stable for at least two
weeks.

10 Binding Capture of Recombinant FcRII

This step is performed just prior to assay.
Stripwells were decanted prior to assay and wash x2 with
PBS/0.2%BSA pH7.4. Wells are blocked by adding 200 µl
PBS/2%BSA pH7.4 then incubated for 30 min at room
15 temperature. This was decanted and 100 µl recombinant
FcRII was added, 1µg/ml per well. This was then incubated
at 37°C for 30 min. Wells were then washed x4 with
PBS/0.2%BSA.

Elisa Assay

20 Standard (100 µl), control or test sample were
added per well. A standard curve was prepared by diluting
heat aggregated IgG in PBS. This was incubated at 37°C for
30 min. then washed x4 with PBS/0.2%BSA. Working dilution
of goat anti-human IgG alkaline phosphatase conjugate (100
25 µl) (Sigma) was added and then incubated at room
temperature for on hour then washed x4 with PBS/0.2%BSA.
p-nitrophenyl phosphate substrate (Sigma 104 phosphatase
tablets:-2.5mg.ml carbonate buffer) (100 µl) was added and
this was incubated at room temperature in the dark for 30
30 min. then the reading was taken at OD 405 nm. Note: Samples
tested for anti-mouse reactivity by substituting mouse
IgG2b (Sigma MOPC-141) for 8.26 mAb.

Fig. 13 shows that ELISA plates were coated with
rec.sFcγRII denoted in the figure as rsFcγRII or with
35 HSA:FcγRII fusion protein (denoted in the figure as rsHSA-

- 58 -

FCR). Aggregated immunoglobulin (HAGG) was titrated and bound immunoglobulin detected using HRP conjugated anti-human Ig.

Using standard protocols for attachment of proteins to ELISA plates it is clear that "spacing" the protein with Fc binding ability away from the surface improves the activity of the protein. This can be accomplished by standard methods such as by using an antibody that binds to the polypeptide of the invention or by attaching the extracellular domains of the polypeptide to another molecule such as a protein, dextran, etc. A useful antibody for a spacer is antibody 8.2 or 8.26. The detection of immune complexes in the form of HAGG or in serum of patients with rheumatoid arthritis is improved by using these approaches. Table III below shows that rec.sFcγRII bound to anti-FCR antibody binds preferentially to HAGG over monomeric Ig (measured OD 405nm). The monomeric Ig is contaminated with 10-20% aggregates.

Table 4

20 Monomeric V Heat Aggregated IgG (OD 405 nm)

Conc RFcγRII ng/ml	RFcγRII Only	RFcγRII IgG*	RFcγRII + HAGG
750	33	204	1230
500	23	204	1136
250	15	202	1444
125	18	158	1030
62.5	24	122	906
31.3	24	102	808
Blank	28	59	456

30 * Mostly monomeric Ig (known contain 10-20% aggregated Ig)

In this connection Fig 14 shows Elisa plates were either coated with anti-FcγRII antibody 8.2 and then with rec.sFcγRII (A) or with rec.sFcγRII (B). After blocking with BSA serum from a patient with rheumatoid arthritis was

- 60 -

The principle of the invention is to use known or unknown compounds to attempt to inhibit the binding of polypeptides with Fc binding ability to immune complexes. The polypeptides of the present invention may be labelled directly or indirectly. These polypeptides may be rec.sFcγRII or HSA:FcRII. In the format described, an ELISA assay is used wherein immune complexes are attached to a surface under standard incubation conditions. Polypeptides of the invention are directly labelled with a reporting enzyme, horseradish peroxidase (HRP) and mixed with the putative antagonists. This mixture is added to the immune complexes and any inhibition of binding of the polypeptides of the invention to immune complexes results in a decrease in the colour development when HRP-substrate is added as per a standard ELISA.

It is important to note that any reporting substance could be used, eg. radioiodine, other enzymes such as alkaline phosphatase, beads or erythrocyte to which the receptor had been attached, flurogenic substances, etc. In the present format HRP is attached to HSA-FcγRII. Our results indicated that when HRP is used as a label it is necessary to employ a spacer in order to preserve Fc binding ability.

An alternative strategy which requires use of an indirect assay may be employed. In such an assay the polypeptide of the invention is added to a mixture of putative inhibitors and the mixture is then added to the immune complexes which are attached to a surface. Following an incubation period the surface is washed and any Fc receptor that is bound is detected using anti-receptor antibody. Any antagonists of the Fc binding ability of the polypeptides inhibit the binding to immune complexes and reduce potential signal.

Specifically the following protocol was used. HAGG plates were prepared by incubating 50 μl-well HAGG at 25 μg/ml in coating buffer (0.5M carbonate/bicarbonate, pH9.6), for 16 hours at 37°. Some wells contained no HAAG

- 61 -

as a negative control. To prevent non-specific binding to the surface, the wells of the plates were treated with mPBS containing 1% (w/v) bovine serum albumin at 3 hours at 37°. The wells were then rinsed three times by immersion in mPBS. Samples containing soluble FcγRII were diluted as required and added in a volume of 30 μl. Dilutions of a standard of rec.sFcγRII were made and added in a volume of 30 μl to generate a standard curve. Last, 30 μl of a detection reagent (consisting of a 1/1000 dilution of

5 mPBS. Samples containing soluble FcγRII were diluted as required and added in a volume of 30 μl. Dilutions of a standard of rec.sFcγRII were made and added in a volume of 30 μl to generate a standard curve. Last, 30 μl of a detection reagent (consisting of a 1/1000 dilution of

10 Amersham (#9310) anti-mouse IgFab'2 fragment HRP conjugate and the anti-FcγRII antibody 8.2 at 0.6 μg/μl (in PBS, 1% BSA) was added and incubated for 1 hour at 37°. The plates were then washed by immersion 8 times in PBST. Subsequently ABTS reagent was added (100 ml) and read at a 405 nm.

15 The data in Figure 17 demonstrates that rec.sFcγRII produced in mammalian cells (CMOrsFcR) or in bacteria (C2rsFcγR2) or even as a fusion protein with a bacterial maltose binding protein (C2MBPrsFcR) can be used in this assay. The specificity of the assay is

20 demonstrated by the fact that the molecule comprising a single FcγRII domain (d2) shows no detectable binding to immune complexes.

It should be noted that in both examples it is possible that other receptors could be used to detect

25 binding to other immunoglobulin classes and immune complexes such as IgE and FcεR, IgM and FcμR or FcγRIII or FcγRII and IgG complexes.

We have been able to demonstrate that the above method and variations thereof are able to usefully detect

30 compound that inhibit the interaction of FcγRII with immune complexes.

Specifically the following method has been used. HAAG plates were prepared by incubating 50 μl/well at 25 μg/ml in coating buffer for 16 hours at 37°C. A negative

35 control containing no HAAG was also prepared. To prevent non-specific binding to the surface, the wells of the plates were treated with mPBS containing .5% (w/v) Tween 20

- 62 -

(for library screening) or 1% (w/v) bovine serum albumin for 3 hours at 37°C.

The specificity tests for inhibition of binding of rec.sFcγRII were conducted as follows. Wells were rinsed 3 times by immersion in mPBS containing 0.05% (w/v) Tween 20 (PBST). Serial 1:2 dilutions in a volume of 25 μl of rec.sFcγRII (purified from supernatants of CHO cells transfected with DNA encoding rec.sFcRII) with starting concentration of 45 μg per μl. The HRP conjugated HSA:FcγRII fusion protein was added (25 μl at 1:100 dilution). This corresponds to approximately 4 μg/μl or 40nM wrt rsHSA-FcγRII fusion HRP-conjugate. This was incubated for 1 hour at 37°C.

Screening of the libraries of compounds or biological preparations the inhibition of Fc binding activity were conducted as follows. Wells were rinsed three times by immersion in mPBS containing .05% w/v Tween 20 (PBST). Solutions (2 μl) containing compounds were added to a solution containing HRP conjugated HSA:FcγRII fusion protein (100 μl at 1:200 dilution). This corresponds to approximately 4 μg/μl or 40 nM wrt rsHSA-FcγRII fusion HRP-conjugate). This was incubated for 1 hour at 37°C then 90 μl was transferred to a plate containing HAGG as defined above.

Screening biological preparations or libraries for inhibition of Fc binding ability (second version). Wells were rinsed by immersion of PBS as described above. Serial dilutions of the solution (patients sera or libraries of compounds) in 100 μl of mPBS containing 1.0% BSA (w/v) were incubated for 1 hour at 37°C, plates were washed 4 times in PBS and then the HRP conjugated HSA:FcγRII fusion protein was added (50 μl at 1:100 dilution). This corresponds to approximately 8 μg/μl or 80 nM wrt rsHSA:FcγRII fusion protein HRP-conjugate. This was incubated for one hour at 37°C. The plates were then washed by 5 times immersion in PBST. ABTS reagent (100 μl) was added and this was read at A405nm.

- 63 -

Data (not shown) was generated by using rec.FcγRII to specifically inhibit the binding of HRP conjugated HSA:FcγRII protein to immune complexes that were attached to the plate surface. As increasing quantities of the rec.sFcRII were added to the assay the amount of HRP-HSA:FcγRII binding to HAGG decreased. These results indicated that the binding of the HRP-HSA:FcγRII fusion protein to immune complexes is specific and that inhibitors of the interactions between FcγRII and immune complexes can be detected.

In another experiment (Fig 18) the presence of inhibitors of FcγRII:immune complex interactions were identified in the sera of patients. In these cases the sera were titrated in the HAGG coated elisa plates and HRP-HSA:FcγRII fusion protein was added. Clearly the sera of the patients containing rheumatoid factors inhibit the binding of the HRP-HSA:FcγRII protein to immune complexes. This is indicated by a reduction in the absorbance compared to that obtained using normal sera (column 15).

In another experiment the HRP-HSA:FcγRII was used to screen a library of organic compounds. This library was produced by standard chemistry as described in Simon *et al* PNAS 89 :9367 (1992) "Peptoids A Modular Approach to Drug Discovery". In this a collection of synthesised compounds is produced and the capacity of individual compounds (or sets of compounds) to inhibit the binding of HRP-HSA:FcγRII to immunoglobulin is assessed by preincubating the library components (the compounds) with HRP-HSA:FcγRII fusion protein or any other polypeptide of the present invention. The polypeptides may be specific for other classes of immunoglobulin such as IgE or IgA. The HRP-HSA:FcγRII is mixed with the compounds and the effect on binding to HAGG (or any immune complex) is determined as described directly above. Inhibition of binding is indicated by decreased absorbance compared to the control (no inhibitor). The results of such an experiment are given in Fig 19. This shows a di-peptoid library which was screened as described

- 64 -

above. As an example of the type of results obtained, the maximum binding is indicated by an absorbance (at 540 nm) of .619 units. In the presence of compound TC1 this absorbance value falls to .3085 which is equivalent to the background value, .304. TC1 completely inhibits the interaction with immune complexes of the HRP polypeptide conjugate. In addition some compounds clearly do not inhibit the interaction, for example RB1. Incubation of the conjugate with RB1 does not inhibit the interaction since an absorbance of .597 was obtained which is similar to the maximum binding (.619) obtained by the conjugate binding to HAGG in the absence of any inhibitor. It should be noted that these functional assays can be used to screen for inhibitors of Fc receptor function either by binding to the Fc receptor or by binding to the immune complex (IgA, IgE, IgG, IgM, IgD) at the site where the Fc receptors bind. This second type of antagonist does not fit the classical definition of an antagonist of Fc receptor function, however, it is still within the scope of the present invention in as far as the present invention relates to a method of testing compounds for their ability to inhibit Fc receptor function and to the antagonists per se identified by such a method.

REFERENCES

1. Unkeless, J.C., & Freedman V.H.
Ann. Rev. Immunol., 1988 6 251-281.
2. Van de Winkel, J.G.J. & Anderson, C.L.
5 J. Leuk. Biol., 1991 49 511-524.
3. Ravetch, J.V. & Kinet, J.-P.
Ann. Rev. Immunol., 1991 9 457-492.
4. Graziano, R.F. & Fanger, M.W.
J. Immunol., 1987 139 3536-3541.
- 10 5. Anderson, C.L., Shen, L., Eicher, D.M., Wewers, M.D. & Gill, J. K.
J. Exp. Med., 1990 171 1333-1345.
6. Rigley, K.P. & Klaus, G.B.
Eur. J. Immunol., 1989 19 481
- 15 7. Stuart, S.G., Troustine, M., Vaux, T., Koch, T., Martens, C., Mellman, I. & Moore, K. W.
J. Exp. Med., 1988 166 1668-1684.
8. Hibbs, M.L., Bonadonna, L. Scott, B.M., McKenzie, I.F.C. & Hogarth, P.M.
20 Proc. Natl. Acad. Sci. (USA), 1988 85 2240-2244.
9. Stengelin, S., Stamenkovic, I. & Seed, B.
EMBO J., 1988 7 1053-1059.
10. Brooks, D.G., Qiu, W.Q., Luster, A.D. & Ravetch, J.V.
J. Exp. Med., 1989 170 1369-1385.
- 25 11. Stuart, S.G., Simister, N.E., Clarkson, S.B., Shapino, M. & Mellman, I.
EMBO J., 1989 3657-3666.
12. Allen, J.M. & B. Seed.
Science, 1989 243 378-381.
- 30 13. Simmons, D. & Seed B.
Nature, 1988 333 568-570.
14. Ravetch, J.V. & Perussia, B.
J. Exp. Med., 1989 170 481-491.
- 35 15. Shimizu, A., Tepler, I., Bemfrey, P.N., Berenstein, E.H. and Leder P.
Proc. Natl. Acad. Sci. (USA), 1988 85 1907-1911.

16. Maliszewski, C.R., March, C.J., Shoenborn, M.A.,
Gimpel, S. & Li, S.
J. Exp. Med., 1990 172 1665-1672.
- 5 17. Hulett, M.D., McKenzie, I.F.C. & Hogarth, P.M.
Eur. J. Immunol., 1993 23 640-645.
18. Hogarth, P.M., Hulett, M.D., Ierino, F.L. Tate, B.,
Powell, M.S. & Brinkworth, R.I.
Immunol. Rev., 1992 125 21-35.
- 10 19. Ierino, F.L., Hulett, M.D., McKenzie, I.F.C. &
Hogarth, P. M.
J. Immunol., 1993 150 1794-1799.
20. Hulett, M.D., Witort, E., Brinkworth, R.I.,
McKenzie, I.F.C. & Hogarth, P.M.
J. Biol. Chem., 1994 269 15287-15293.
- 15 21. Tax, W.J.M., Willems, H.W., Reekers, R.W. Capel,
P.J.A. & Koene R.A.P.
Nature, 1983 304 445-447.
22. Warmerdam, P.A., Van de Winkel, J.G.J., Vlug, A.,
Westerdaal, N.A.L. & Capel, P. J. A.
20 J. Immunol., 1992 147 1338-1343.
23. Tate, B.J., Witort, E., McKenzie, I.F.C. &
Hogarth, P.M.
Immunol. and Cell Biol., 1992 70 79-87.
24. Hibbs, M.L., Hogarth, P.M. & McKenzie, I.F.C. (1985)
25 Immunogenetics, 1985 22 335-348.
25. Lah, M., Quelch, K., Deacon, N.J., McKenzie, I.F.C. &
Hogarth, P.M.
Immunogenetics, 1990 31 202-206.
26. Robinson, M.W.
30 J. Biol. Chem., 1993 268 12736-12743.
27. Horton, R.M., Hunt, H.D., Ho, S.N., Pullin, J.K. &
Pearse, L.R.
Gene, 1988 77 61-68.
28. Sambrook, J., Fritsch, E.F., and Maniatis, T.
35 (1989) Molecular cloning: A Laboratory Manual, 2nd
Ed., Cold Spring Harbor Laboratory, Cold Spring
Harbor, NY.

29. Van Doren, K., Hanahan, D., & Gluzman, Y
J. Virol., 1984 50 606-614 .
30. Sanger, F., Nicklen, S., and Coulson, A.R. (1977)
Proc. Natl. Acad. Sci. (USA), 1977 74 5463-5467.
- 5 31. Kraft, R., Tardiff, J., Krauter, K.S. and
Leinward, L.A.
Biotechniques, 1988 6, 544-547.
32. Seed, B., and Aruffo, A.
Proc. Natl. Acad. Sci. (USA), 1987 84 3365.
- 10 33. Lopez, A.F., Strath, M. and Sanderson, C.J.
Immunology, 1983 48 503-509.
34. Ey, P.L., Prowse, S.J. and Jenkins, C.R.
Immunochemistry, 1978 15 429-435.
- 15 35. Pietersz, G.A., Kanellos, J. & McKenzie, I.F.C.
Cancer Res., 48 4469-4476.
36. Parish, C.R. and Hayward, J.A.
Proc. R. Soc. Lond. (Biol.), 1974 187 47-56.
37. Harlow, E. and Lane, D. (1988)
Labelling antibodies. In Antibodies - A Laboratory
20 Manual. Cold Spring Harbor Laboratories. Cold Spring
Harbor, NY.
38. Farber, D.L., Giorda, R., Nettleton, M.Y., Trucco, M.,
Kochan, J.P. & Sears, D.W.
J. Immunol., 1993 150 4364-4361.
- 25 39. Hibbs, M.L., Tolvanen, M. & Carpen, O.
J. Immunol., 1994 152 4466-4474.
40. Mallimaci, M.A., Chizzonite, R., Griffen, M.,
Nettleton, M., Hakimi, J., Tsien, W-H. & Kochan, J. P.
J. Biol. Chem., 1993 268 22079-22083.
- 30 41. Riske, F., Hakimi, J., Mallamaci, M., Griffen, M.,
Pilson, B., Tobkes, N., Lin, P., Danho, W., Kochan, J.
& Chizzonite, R.
J. Biol. Chem., 1991 266 11245-11251.

- 68 -

CLAIMS

1. An isolated polypeptide with Fc binding ability, wherein the polypeptide is altered compared to a native Fc receptor by addition, deletion and/or substitution of one or more amino acids compared to said native receptor and said alteration results in improved characteristics compared to said native receptor.
2. The polypeptide of claim 1 which is an Fc receptor-like molecule with an altered ability to bind Fc wherein said altered ability is brought about by alteration of one or more amino acids which affect immunoglobulin binding ability.
3. The polypeptide of claim 1 or claim 2 which is able to bind IgG, IgE, IgA, IgM or IgD.
4. The polypeptide of claim 3 wherein the alterations are in the first and/or second domain.
5. The polypeptide of claim 4 wherein the alterations are in A/B, C/C' and/or E/F loops of domain 1 and/or G/A strand and where the polypeptide is able to bind IgG or IgE.
6. The polypeptide of claim 4 wherein the alterations are in B/C, C'/E, and/or F/G loops of domain 2 and where the polypeptide is able to bind IgG or IgE.
7. The polypeptide of claim 5 or claim 6 having enhanced ability to bind Fc compared to a native Fc receptor in a given class.
8. The polypeptide of claim 7 wherein the alterations are in the first domain at amino acid positions 133, 134, 158, 159 and/or 160 compared to a native Fc receptor.
9. The polypeptide of claim 8 wherein the amino acids are changed to alanine.
10. The polypeptide of claim 9 wherein Asp¹³³ and/or Pro¹³⁴ are changed to alanine.
11. The polypeptide of claim 7 wherein the alterations are in the second domain at amino acid positions 130, 156, 160 and/or 161 compared to a native Fc

- 69 -

receptor.

12. The polypeptide of claim 11 wherein the amino acids altered are changed to alanine.
13. The polypeptide of claim 12 wherein Trp¹³⁰,
5 Trp¹⁵⁶, Tyr¹⁶⁰ and/or Glu¹⁶¹ are changed to alanine.
14. The polypeptide of claim 4 having a reduced ability to bind immunoglobulin compared to a native Fc receptor in a given class.
15. The polypeptide of claim 1 wherein the
10 polypeptide is altered compared to a native Fc receptor such that the size of the polypeptide is larger than said native Fc receptor.
16. The polypeptide of any one of claims 1 to 15 which is soluble.
- 15 17. The polypeptide of claim 15 or claim 16 wherein said size is 67 to 1000 kD.
18. The polypeptide of claim 15 in the form of a fusion protein comprising an Fc binding component and a fusion component.
- 20 19. The polypeptide of claim 18 wherein the Fc binding component is an extracellular region of a native Fc receptor, a portion of said native Fc receptor or the polypeptide of any one of claims 1 to 7.
- 25 20. The polypeptide of claim 19 wherein the fusion component is a physiologically tolerated protein or other molecule selected from the group of human serum albumin, Fc receptor, complement regulating molecules, complement receptors, cytokine receptors, dextran, carbohydrate, polyethylene glycol and synthetic polymers.
- 30 21. The polypeptide of claim 20 comprising HSA:FcγRII.
22. The polypeptide of claim 1 comprising a component capable of detection.
23. The polypeptide of claim 22 wherein the component
35 capable of detection comprises a direct or indirect label.
24. The polypeptide of claim 23 wherein said component capable of detection is a radiolabel,

- 70 -

chemiluminescent label, chromophoric label, a labelled antibody, or a detectable enzyme such as horse radish peroxidase or alkaline phosphatase.

5 25. A method of testing a compound for its ability to act as an antagonist of an Fc receptor said method comprising contacting the compound with a polypeptide with Fc binding ability or a Fc receptor or part thereof under conditions and for a time sufficient to allow any binding of the compound and the polypeptide or Fc receptor or part
10 thereof to take place, and then determining whether binding has occurred.

26. The method of claim 25 wherein the polypeptide of any one of claims 1 to 7, 14, 15 and 22.

15 27. The method of claim 25 wherein said compound is tested for its ability to inhibit binding of IgG or IgE.

28. An antagonist compound isolated by the method of claim 26.

20 29. The antagonist of claim 28 wherein said compound is capable of blocking the function of the A/B, C/C', and/or E/F loops in the first domain and/or the B/C, C'/E and/or F/G loops in the second domain and/or the G/A strand of an IgG or an IgE Fc receptor.

30. The antagonist of claim 28 which acts by binding Ig rather than Fc receptor.

25 31. A pharmaceutical composition comprising the polypeptide of any one of claims 1 to 21 or the antagonist of claim 28 together with a pharmaceutically appropriate carrier or diluent.

30 32. An isolated nucleic acid molecule encoding a polypeptide with Fc binding ability wherein the polypeptide is altered compared to a native Fc receptor by addition, deletion and/or substitution of the amino acids encoded by the nucleic acid compared to a native Fc receptor and wherein said alteration results in improved characteristics
35 compared to said native receptor.

33. The molecule of claim 32 which encodes an Fc receptor-like molecule comprising an altered ability to

- 71 -

bind immunoglobulin wherein said ability is brought about by alteration of one or more amino acid residues which affect immunoglobulin binding ability.

5 34. The molecule of claim 32 or claim 33 wherein said polypeptide encoded binds IgG, IgE, IgA, IgM or IgD.

35. The molecule of claim 32 which encodes a soluble polypeptide.

10 36. The molecule of claim 33 wherein the polypeptide encoded has alterations in A/B, C/C' and/or E/F loops of domain 1 and/or G/A strand and where the polypeptide is able to bind IgG or IgE.

15 37. The molecule of claim 33 wherein the polypeptide encoded has alterations in the B/C, C'/E and/or F/G loops of domain 2 and where the polypeptide is able to bind IgG or IgE.

38. The molecule of claim 33 which encodes a polypeptide with an enhanced ability to bind immunoglobulin compared to a native Fc receptor in a given class.

20 39. The molecule of claim 36 wherein the alterations are in the first domain at amino acid positions 133, 134, 158, 159 and/or 160 compared to a native Fc receptor.

40. The molecule of claim 39 wherein the amino acid altered are changed to alanine.

25 41. The molecule of claim 40 wherein Asp¹³³ and/or Pro¹³⁴ are changed to alanine.

42. The molecule of claim 37 wherein the alterations are in the second domain at amino acid positions 130, 156, 160 and/or 161.

30 43. The molecule of claim 42 where in the amino acids altered are changed to alanine.

44. The molecule of claim 43 wherein Trp¹³⁰, Trp¹⁵⁶, Tyr¹⁶⁰ and/or Glu¹⁶¹ are changed to alanine.

35 45. A molecule of claim 33 encoding a polypeptide with a reduced ability to bind immunoglobulin compared to a native Fc receptor.

46. The molecule of claim 32 wherein the polypeptide is altered compared to a native Fc receptor such that the

- 72 -

size of the polypeptide is larger than said native Fc receptor.

47. The molecule of any one of claims 32 to 46 wherein the polypeptide is soluble.

5 48. The molecule of claim 46 or claim 47 wherein the size of the polypeptide is 67 to 1000 kD

49. The molecule of claim 46 wherein said polypeptide is a fusion protein comprising an Fc binding component and a fusion component.

10 50. The molecule of claim 49 wherein said Fc binding component is provided by a nucleotide sequence which encodes a polypeptide having enhanced Fc binding ability compared to a native Fc receptor or by a nucleotide sequence encoding a native Fc receptor or a portion thereof.

15 51. The molecule of claim 50 wherein the fusion component encoded is a physiologically tolerated protein selected from the group of human serum albumin, Fc receptors, complement receptors, complement regulating proteins and cytokine receptors.

20 52. The molecule of claim 51 being the construct encoding HSA:FcγRII.

53. A vector comprising the molecule of any one of claims 32 to 52.

25 54. A host cell transformed or transfected with the vector of claim 53.

55. A method of making a nucleic acid molecule encoding a polypeptide with Fc binding ability wherein the polypeptide is altered compared to a native Fc receptor by addition, deletion and/or substitution of one or more amino acids encoded by said molecule compared to a native Fc receptor and wherein said alteration results in improved characteristics compared to said native receptor, said method comprising producing a nucleic acid molecule
30 encoding the polypeptide by addition, deletion and/or substitution of one or more codons specific for amino acids affecting immunoglobulin binding ability of the
35

- 73 -

polypeptide.

56. A method of producing the polypeptides of any one of claims 1 to 24 comprising obtaining expression of the polypeptide in the host cell of claim 54.
- 5 57. A method of determining the presence and/or amount of immunoglobulin in a sample said method comprising contacting said sample with the polypeptide of any one of claims 1 to 24, or an Fc receptor or part thereof, for a time and under conditions sufficient to allow the
10 polypeptide or the Fc receptor or part thereof and any immunoglobulin present in said sample to bind, and detecting presence of and/or determining the amount of said bound polypeptide - immunoglobulin, bound Fc receptor-immunoglobulin or bound part Fc receptor-immunoglobulin.
- 15 58. A kit for detecting immunoglobulin, including for detecting immune complexes, in a sample, said kit comprising in compartmentalised form, a first compartment adapted to receive the polypeptide of any one of claims 1 to 24 or an Fc receptor or a part thereof and at least one
20 other compartment adapted to contain a detector means.
59. The method of claim 57 or the kit of claim 58 wherein said polypeptide is specific for IgG or IgE.
- 25 60. A method of removing immunoglobulin from a sample comprising contacting said sample with the polypeptide of any one of claims 1 to 21 or an Fc receptor or part thereof for a time and under conditions sufficient for any immunoglobulin present in the sample to form a complex with said polypeptide or Fc receptor or part thereof and separating said complex from the remainder of the sample.
- 30 61. A method of removing immunoglobulin from a body fluid comprising taking body fluid from a patient, contacting the body fluid with the polypeptide of any one of claims 1 to 21 or an Fc receptor or part thereof, for a time and under conditions sufficient to allow the
35 polypeptide, Fc receptor or part thereof to bind said immunoglobulin, removing said bound immunoglobulin from the body fluid and replacing said body fluid in the patient.

- 74 -

62. The method of claim 60 or claim 61 wherein said immunoglobulin removed is immunoglobulin complex.
63. The method of claim 62 wherein the polypeptide used is specific for IgG or IgE.
- 5 64. A method of treatment of disease where an excess of immunoglobulin is implicated as a causative agent of the disease said method comprising administering an effective amount of the polypeptide according to any one of claims 1 to 21 to said patient.

FIGURE 1

FIG. 1a

FIG. 1b

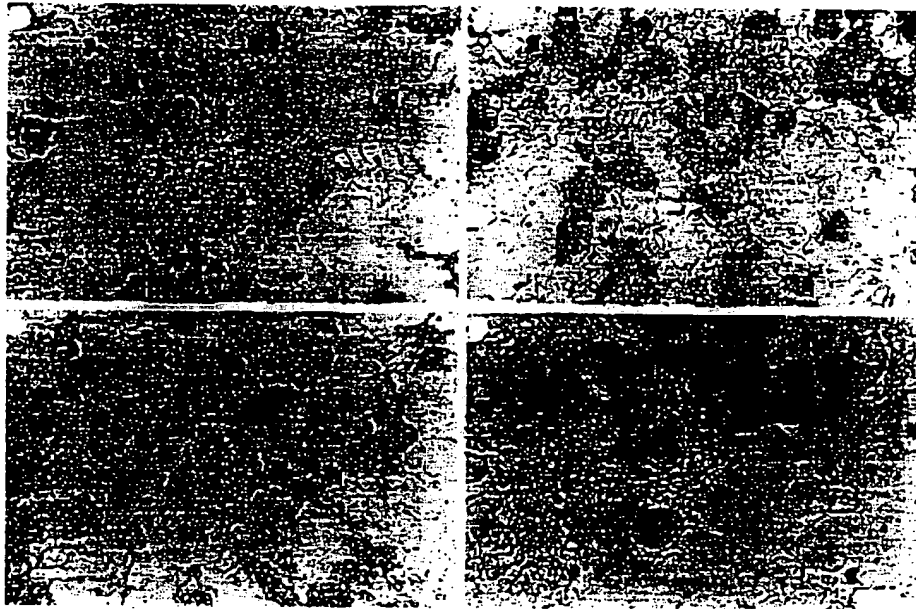


FIG. 1c

FIG. 1d

FIGURE 2

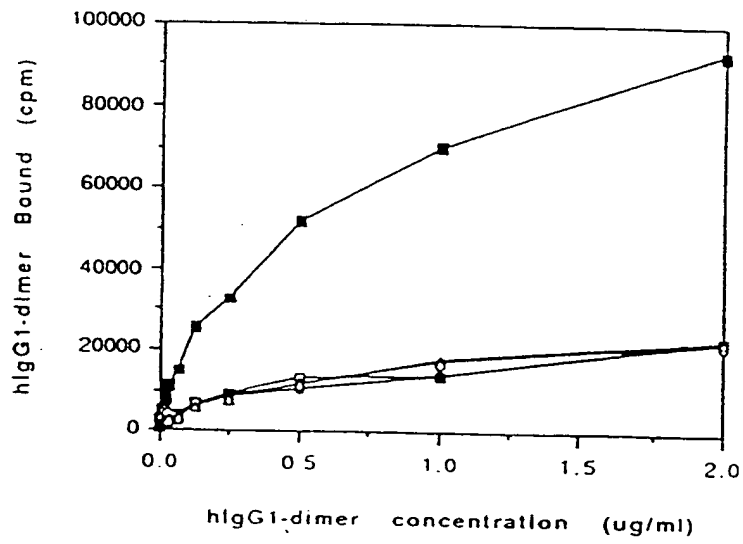


FIGURE 3

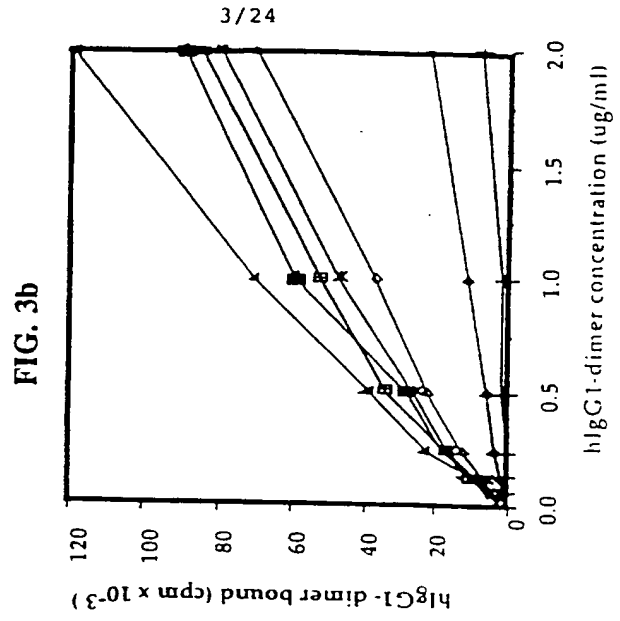
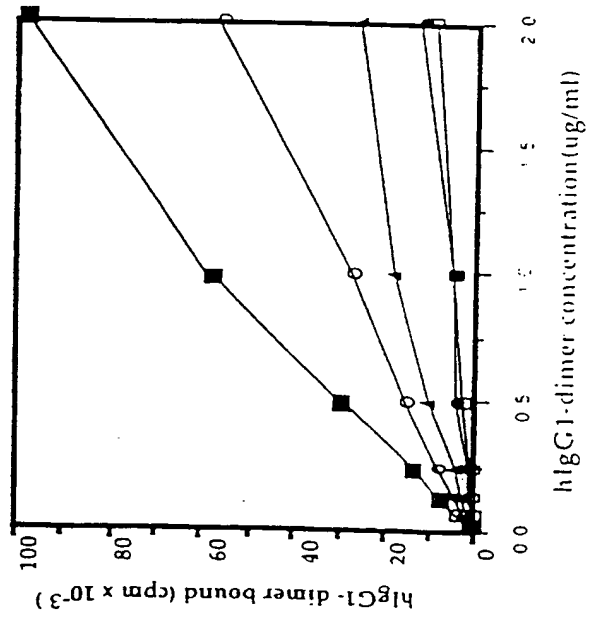


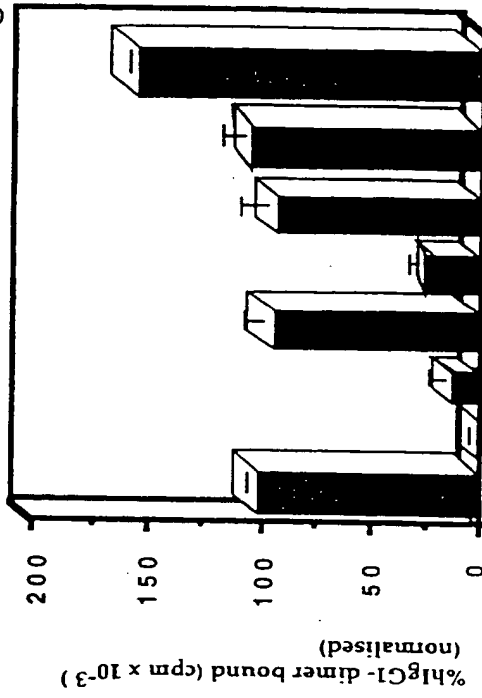
FIG. 3a



4/24

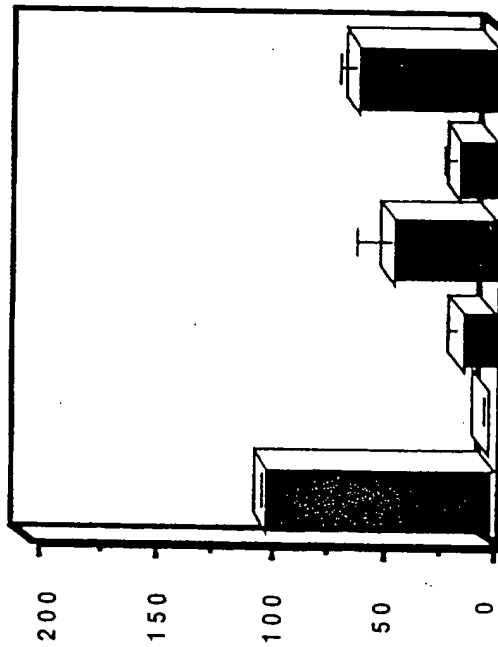
FIGURE 3 CONT'D

FIG. 3d



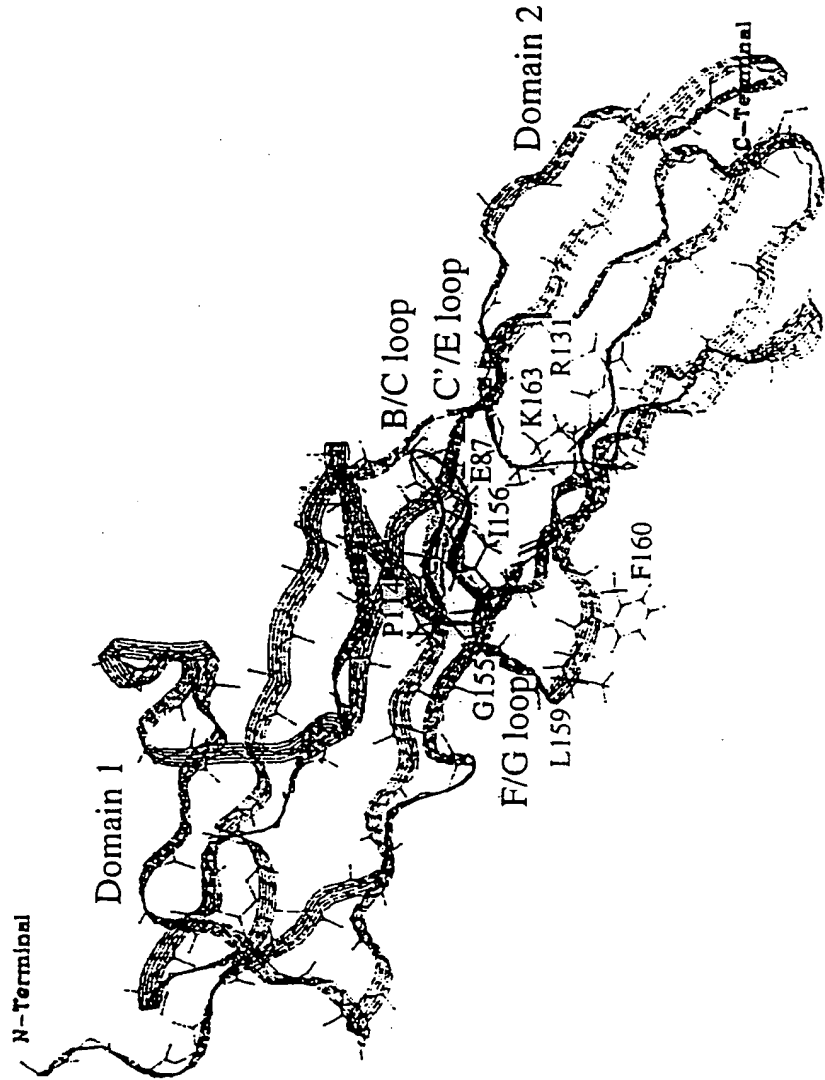
WT Fc γ RII PHE SER HIS LEU ASP PRO
Fc γ RII 129 130 131 132 133 134

FIG. 3c



WT Fc γ RII LYS PRO LEU VAL
Fc γ RII 113 114 115 116

FIGURE 4



6/24

FIGURE 5

huFc_γR1a chain C'-E, F-G loop Ala mutant oligo nucleotides

F-G loop

5

e154 (Lys) * Ala EFG-01 + EFG-02

EFG-01: 5' CTGTACGGGGCGCAGTGTGGCAGC 3'

EFG-02: 5' GCTGCCACACTGCCCCGTACAG 3'

10 e155 (Val) * Ala EFG-03 + EFG-04

EFG-03: 5' GTACCGGCAAAGCATGGCAGCTGG 3'

EFG-04: 5' CCAGCTGCCATGCTTTGCCCGTAC 3'

e156 (Trp) * Ala EFG-05 + EFG-06

15 EFG-05: 5' GGGCAAAGTGGCACAGCTGGAC 3'

EFG-06: 5' GTCCAGCTGTGCCACTTTGCC 3'

e157 (Gln) * Ala EFG-07 + EFG-08

EFG-07: 5' GCAAAGTGTGGGCACTGGACTATG 3'

20 EFG-08: 5' CATAGTCCAGTGCCACACTTTGC 3'

e158 (Leu) * Ala EFG-09 + EFG-10

EFG-09: 5' GTGTGGCAGGCAGACTATGAGTC 3'

EFG-10: 5' GACTCATAGTCTGCCTGCCACAC 3'

25

e159 (Asp) * Ala EFG-11 + EFG-12

EFG-11: 5' GTGGCAGCTGGCATATGAGTCTG 3'

EFG-12: 5' CAGACTCATATGCCAGCTGCCAC 3'

30 e160 (Tyr) * Ala EFG-13 + EFG-14

EFG-13: 5' GCAGCTGGACGCAGAGTCTGAGC 3'

EFG-14: 5' GCTCAGACTCTGCGTCCAGCTGC 3'

7/24

Figure 5 cont.

e161 (Glu) ^oAla EFG-07+EFG-08

EFG-15: 5' GCTGGACTATGCATCTGAGCCCC 3'

EFG-16: 5' GGGGCTCAGATGCATAGTCCAGC 3'

5 C'-E loop

e129 (Tyr) ^oAla EBS-01+EBS-02

EBS-01: 5' GCTCTCAAGGCATGGTATGAGAAC 3'

EBS-02: 5' GTTTCATACCATGCCTTGAGAGC 3'

10

e130 (Trp) ^oAla EBS-03+EBS-04

EBS-03: 5' CTCAAGTACGCATATGAGAACCAC 3'

EBS-04: 5' GTGGTTCTCATATGCGTACTTGAG 3'

15 e131 (Tyr) ^oAla EBS-01+EBS-02

EBS-05: 5' CAAGTACTGGGCAGAGAACCAC 3'

EBS-06: 5' GTGGTTCTCTGCCAGTACTTG 3'

e132 (Glu) ^oAla EBS-07+EBS-08

20 EBS-07: 5' GTACTGGTATGCAAACCACAACATC 3'

EBS-08: 5' GATGTTGTGGTTTGCATACCAGTAC 3'

e133 (Asn) ^oAla EBS-09+EBS-10

EBS-09: 5' CTGGTATGAGGCACACAACATCTCC 3'

25 EBS-10: 5' GGAGATGTTGTGTGCCTCATACCAG 3'

e134 (His) ^oAla EBS-11+EBS-12

EBS-11: 5' GGTATGAGAACGCAAACATCTCCATTAC 3'

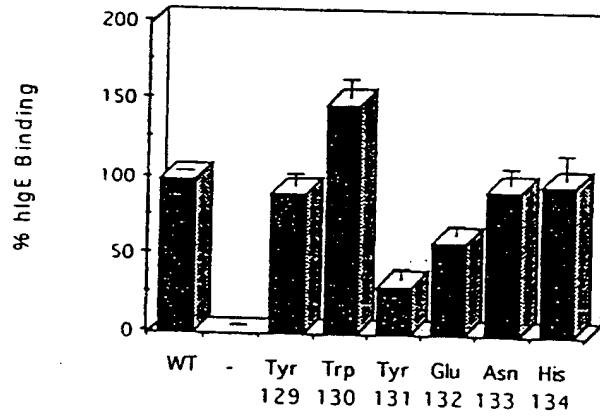
EBS-12: 5' GTAATGGAGATGTTTGC GTTCTCATACC 3'

30

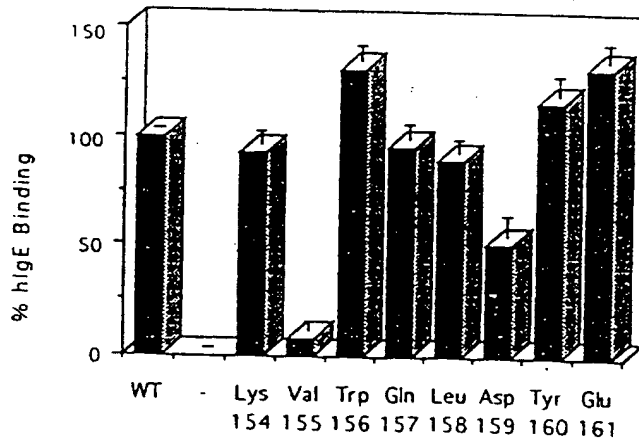
8/24

FIGURE 6

Effect of mutation of the IgE receptor (FcεRI) on the binding of IgE
C'-E LOOP



F-G LOOP



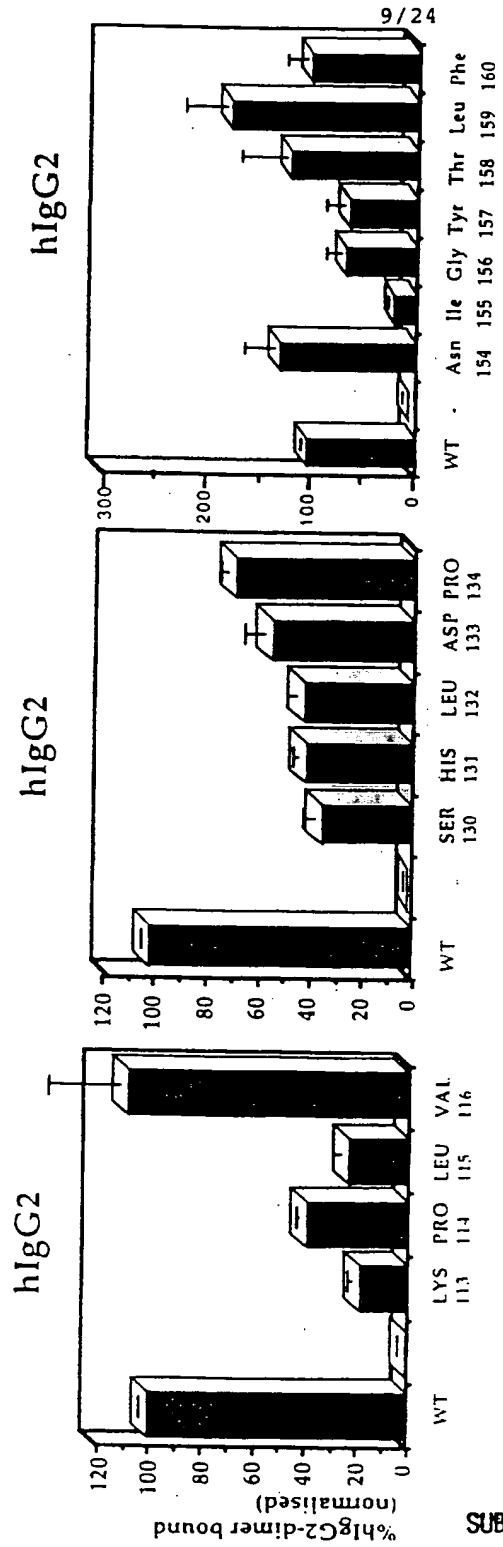


FIGURE 7

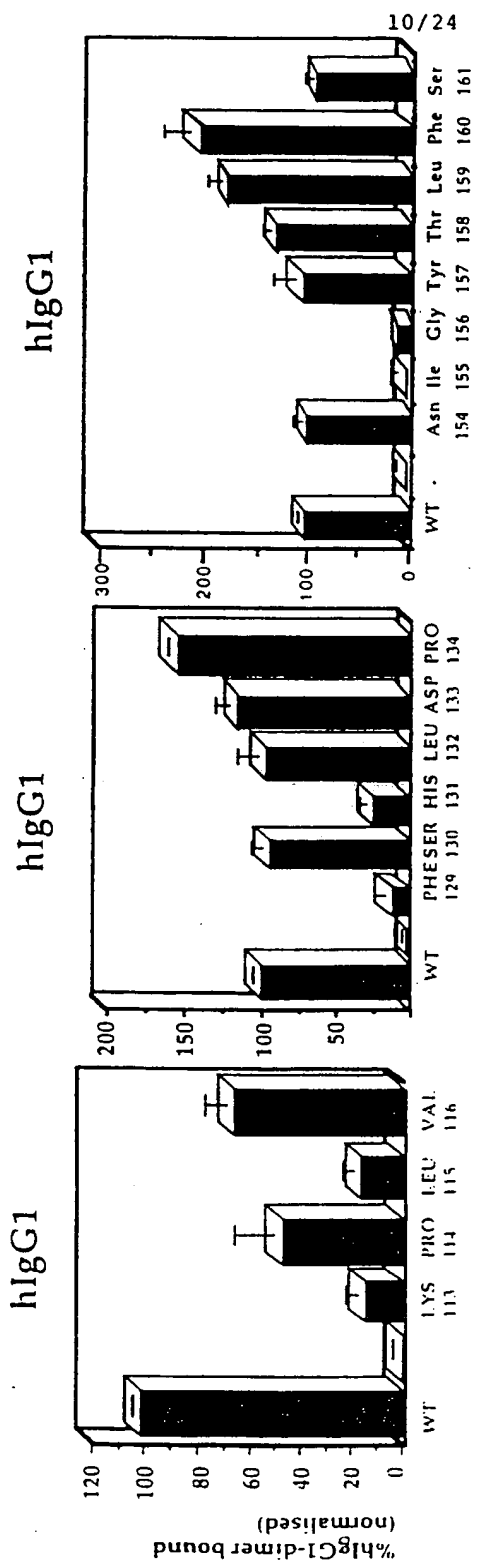
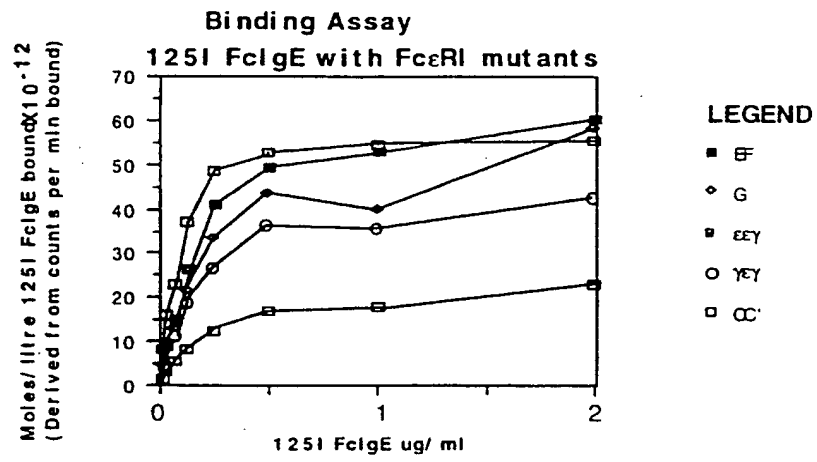


FIGURE 7 CONT'D..

FIGURE 8



12/24

FIGURE 9

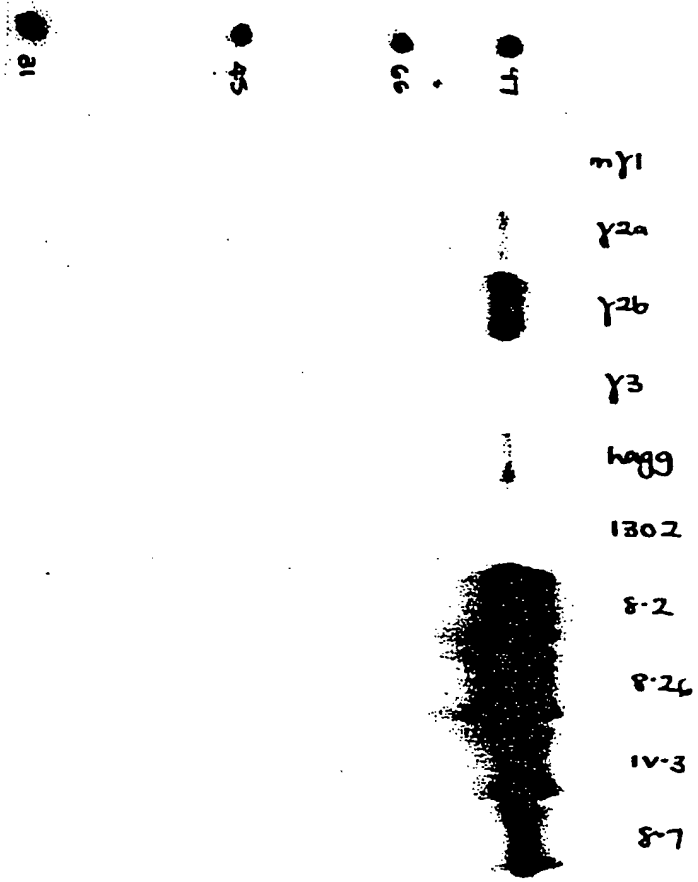


FIGURE 10

FIG. 10
A Blood Clearance of HSA-FcgRII and FcgRII

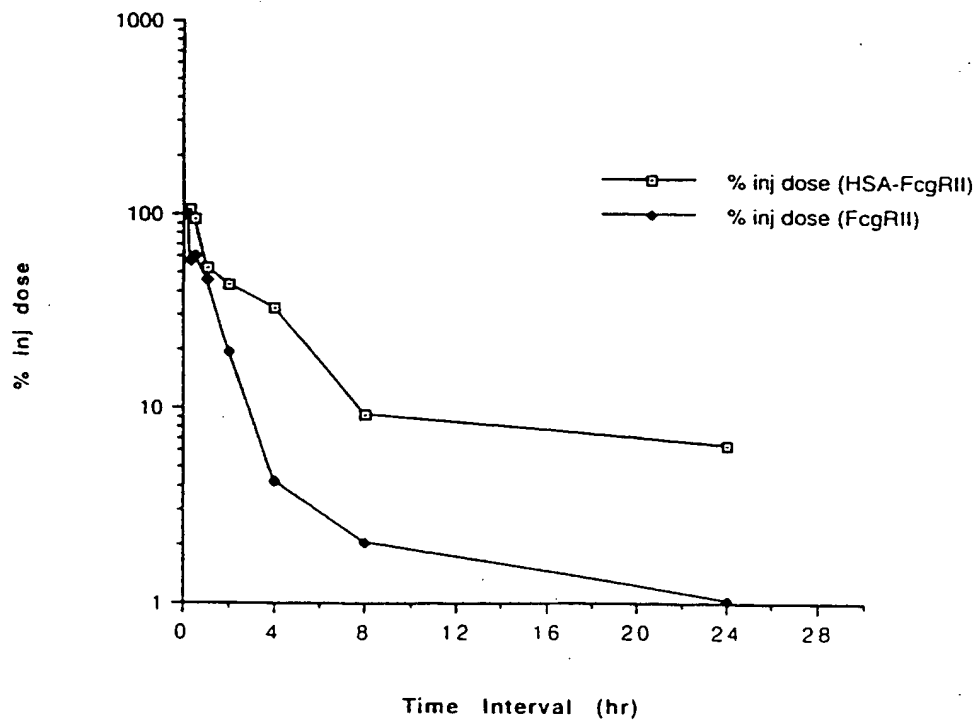


FIGURE 10 CONT'D..

FIG.10
B

Urine accumulated v's time

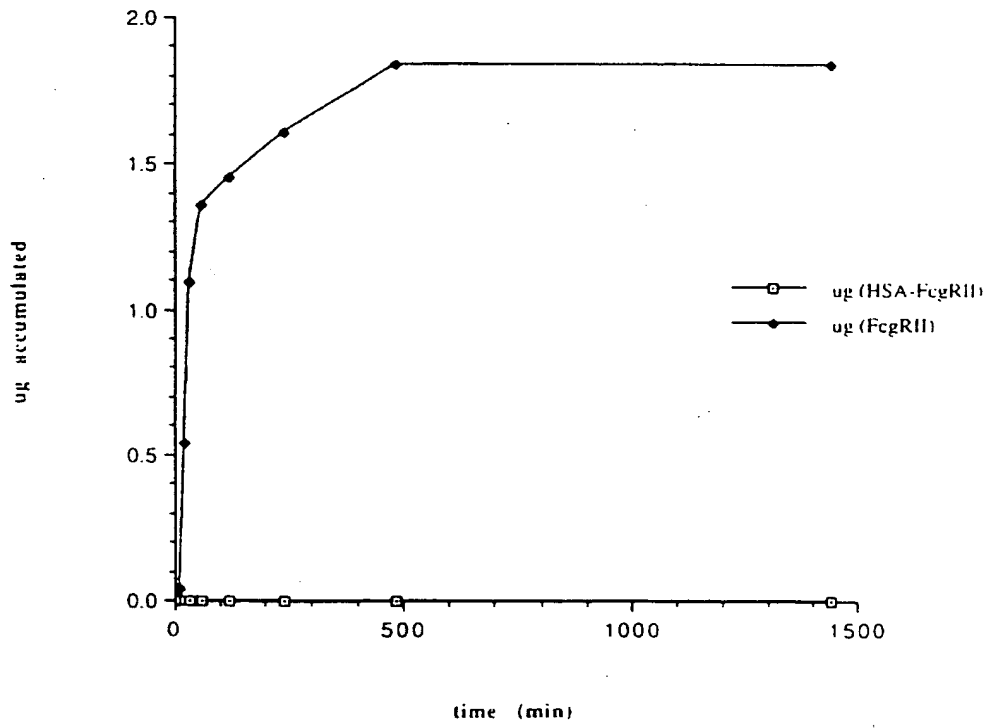


FIGURE 11

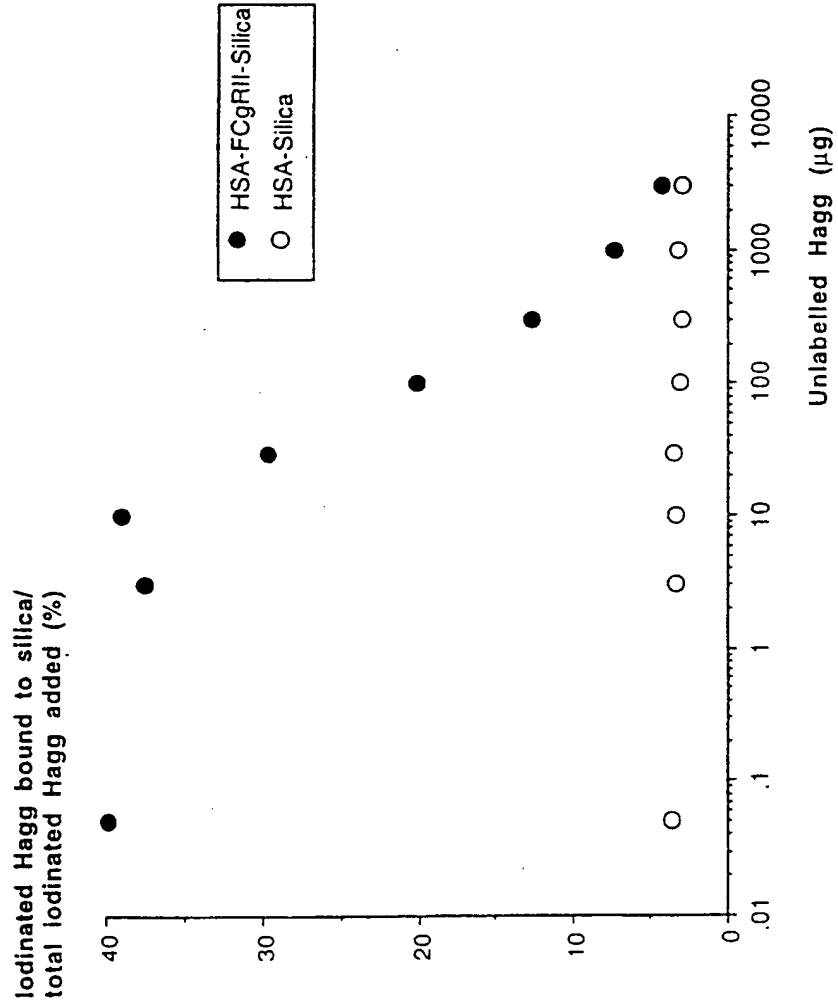


FIGURE 12

16/24

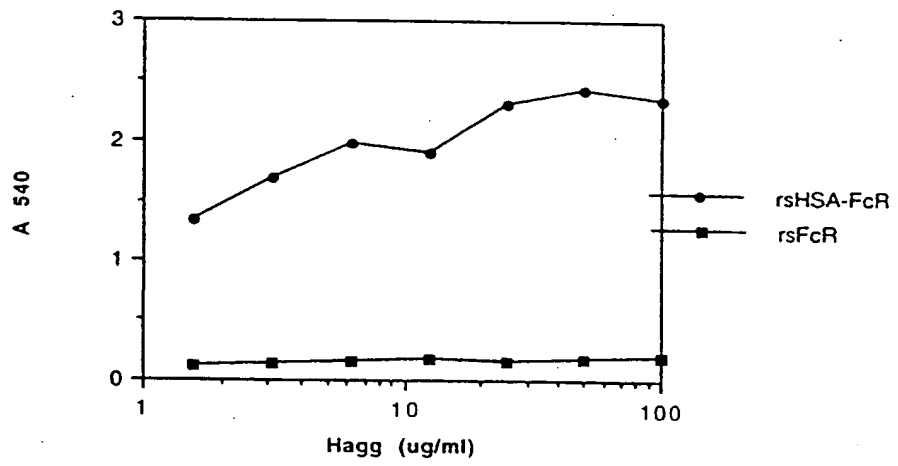
1/1 31/11
 GAT GCA CAC AAG AGT GAG GTT GCT CAT CGG TTT AAA GAT TTG GGA GAA GAA AAT TTC AAA
 asp ala his lys ser glu val ala his arg phe lys asp leu gly glu glu asn phe lys
 61/21 91/31
 GCC TTG GTG TTG ATT GCC TTT GCT CAG TAT CTT CAG CAG TGT CCA TTT GAA GAT CAT GTA
 ala leu val leu ile ala phe ala gln tyr leu gln gln cys pro phe glu asp his val
 121/41 151/51
 AAA TTA GTG AAT GAA GTA ACT GAA TTT GCA AAA ACA TGT GTT GCT GAT GAG TCA GCT GAA
 lys leu val asn glu val thr glu phe ala lys thr cys val ala asp glu ser ala glu
 181/61 211/71
 AAT TGT GAC AAA TCA CTT CAT ACC CTT TTT GGA GAC AAA TTA TGC ACA GTT GCA ACT CTT
 asn cys asp lys ser leu his thr leu phe gly asp lys leu cys thr val ala thr leu
 241/81 271/91
 CGT GAA ACC TAT GGT GAA ATG GCT GAC TGC TGT GCA AAA CAA GAA CCT GAG AGA AAT GAA
 arg glu thr tyr gly glu met ala asp cys cys ala lys gln glu pro glu arg asn glu
 301/101 331/111
 TGC TTC TTG CAA CAC AAA GAT GAC AAC CCA AAC CTC CCC CGA TTG GTG AGA CCA GAG GTT
 cys phe leu gln his lys asp asp asn pro asn leu pro arg leu val arg pro glu val
 361/121 391/131
 GAT GTG ATG TGC ACT GCT TTT CAT GAC AAT GAA GAG ACA TTT TTG AAA AAA TAC TTA TAT
 asp val met cys thr ala phe his asp asn glu glu thr phe leu lys lys tyr leu tyr
 421/141 451/151
 GAA ATT GCC AGA AGA CAT CCT TAC TTT TAT GCC CCG GAA CTC CTT TTC TTT GCT AAA AGG
 glu ile ala arg arg his pro tyr phe tyr ala pro glu leu leu phe phe ala lys arg
 481/161 511/171
 TAT AAA GCT GCT TTT ACA GAA TGT TGC CAA GCT GCT GAT AAA GCT GCC TGC CTG TTG CCA
 tyr lys ala ala phe thr glu cys cys gln ala ala asp lys ala ala cys leu leu pro
 541/181 571/191
 AAG CTC GAT GAA CTT CGG GAT GAA GGG AAG GCT TCG TCT GCC AAA CAG AGA CTC AAG TGT
 lys leu asp glu leu arg asp glu gly lys ala ser ser ala lys gln arg leu lys cys
 601/201 631/211
 GCC AGT CTC CAA AAA TTT GGA GAA AGA GCT TTC AAA GCA TGG GCA GTA GCT CGC CTG AGC
 ala ser leu gln lys phe gly glu arg ala phe lys ala trp ala val ala arg leu ser
 661/221 691/231
 CAG AGA TTT CCC AAA GCT GAG TTT GCA GAA GTT TCC AAG TTA GTG ACA GAT CTT ACC AAA
 gln arg phe pro lys ala glu phe ala glu val ser lys leu val thr asp leu thr lys
 721/241 751/251
 GTC CAC ACG GAA TGC TGC CAT GGA GAT CTG CTT GAA TGT GCT GAT GAC AGG GCG GAC CTT
 val his thr glu cys cys his gly asp leu leu glu cys ala asp asp arg ala asp leu
 781/261 811/271
 GCC AAG TAT ATC TGT GAA AAT CAA GAT TCG ATC TCC AGT AAA CTG AAG GAA TGC TGT GAA
 ala lys tyr ile cys glu asn gln asp ser ile ser ser lys leu lys glu cys cys glu
 841/281 871/291
 AAA CCT CTG TTG GAA AAA TCC CAC TGC ATT GCC GAA GTG GAA AAT GAT GAG ATG CCT GCT
 lys pro leu leu glu lys ser his cys ile ala glu val glu asn asp glu met pro ala
 901/301 931/311
 GAC TTG CCT TCA TTA GCT GCT GAT TTT GTT GAA AGT AAG GAT GTT TGC AAA AAC TAT GCT
 asp leu pro ser leu ala ala asp phe val glu ser lys asp val cys lys asn tyr ala
 961/321 991/331
 GAG GCA AAG GAT GTC TTC CTG GGC ATG TTT TTG TAT GAA TAT GCA AGA AGG CAT CCT GAT
 glu ala lys asp val phe leu gly met phe leu tyr glu tyr ala arg arg his pro asp
 1021/341 1051/351
 TAC TCT GTC GTG CTG CTG CTG AGA CTT GCC AAG ACA TAT GAA ACC ACT CTA GAG AAG TGC
 tyr ser val val leu leu leu arg leu ala lys thr tyr glu thr thr leu glu lys cys
 1081/361 1111/371
 TGT GCC GCT GCA GAT CCT CAT GAA TGC TAT GCC AAA GTG TTC GAT GAA TTT AAA CCT CTT
 cys ala ala asp pro his glu cys tyr ala lys val phe asp glu phe lys pro leu
 1141/381 1171/391
 GTG GAA GAG CCT CAG AAT TTA ATC AAA CAA AAT TGT GAG CTT TTT GAG CAG CTT GGA GAG
 val glu glu pro gln asn leu ile lys gln asn cys glu leu phe glu gln leu gly glu
 1201/401 1231/411
 TAC AAA TTC CAG AAT GCG CTA TTA GTT CGT TAC ACC AAG AAA GTA CCC CAA GTG TCA ACT
 tyr lys phe gln asn ala leu leu val arg tyr thr lys lys val pro gln val ser thr
 1261/421 1291/431

SUBSTITUTE SHEET (Rule 26)

FIGURE 12 CONT'D...

CCA ACT CTT GTA GAG GTC TCA AGA AAC CTA GGA AAA GTG GGC AGC AAA TGT TGT AAA CAT
 pro thr leu val glu val ser arg asn leu gly lys val gly ser lys cys cys lys his
 1321/441 1351/451
 CCT GAA GCA AAA AGA ATG CCC TGT GCA GAA GAC TAT CTA TCC GTG GTC CTG AAC CAG TTA
 pro glu ala lys arg met pro cys ala glu asp tyr leu ser val val leu asn gln leu
 1381/461 1411/471
 TGT GTG TTG CAT GAG AAA ACG CCA GTA AGT GAC AGA GTC ACA AAA TGC TGC ACA GAA TCC
 cys val leu his glu lys thr pro val ser asp arg val thr lys cys cys thr glu ser
 1441/481 1471/491
 TTG GTG AAC AGG CGA CCA TGC TTT TCA GCT CTG GAA GTC GAT GAA ACA TAC GTT CCC AAA
 leu val asn arg arg pro cys phe ser ala leu glu val asp glu thr tyr val pro lys
 1501/501 1531/511
 GAG TTT AAT GCT GAA ACA TTC ACC TTC CAT GCA GAT ATA TGC ACA CTT TCT GAG AAG GAG
 glu phe asn ala glu thr phe thr phe his ala asp ile cys thr leu ser glu lys glu
 1561/521 1591/531
 AGA CAA ATC AAG AAA CAA ACT GCA CTT GTT GAG CTC GTG AAA CAC AAG CCC AAG GCA ACA
 arg gln ile lys lys gln thr ala leu val glu leu val lys his lys pro lys ala thr
 1621/541 1651/551
 AAA GAG CAA CTG AAA GCT GTT ATG GAT GAT TTC GCA GCT TTT GTA GAG AAG TGC TGC AAG
 lys glu gln leu lys ala val met asp asp phe ala ala phe val glu lys cys cys lys
 1681/561 1711/571
 GCT GAC GAT AAG AAG ACC TGC TTT GCC GAG GAG GGT AAA AAA CTT GTT GCT GCA AGT CAA
 ala asp asp lys lys thr cys phe ala glu glu gly lys lys leu val ala ala ser gln
 1741/581 1771/591
 GCT GCC TTA GGC GCT CCC CCA AAG GCT GTG CTG AAA CTT GAG CCC CCG TGG ATC AAC GTG
 ala ala leu gly ala pro pro lys ala val leu lys leu glu pro pro trp ile asn val
 1801/601 1831/611
 CTC CAG GAG GAC TCT GTG ACT CTG ACA TGC CAG GGG GCT CGC AGC CCT GAG AGC GAC TCC
 leu gln glu asp ser val thr leu thr cys gln gly ala arg ser pro glu ser asp ser
 1861/621 1891/631
 ATT CAG TGG TTC CAC AAT GGG AAT CTC ATT CCC ACC CAC ACg cAG CCC AGC TAC AGG TTC
 ile gln trp phe his asn gly asn leu ile pro thr his thr gln pro ser tyr arg phe
 1921/641 1951/651
 AAG GCC AAC AAC AAT GAC AGC GGG GAG TAC ACG TGC CAG ACT GGC CAG ACC AGC CTC AGC
 lys ala asn asn asp ser gly glu tyr thr cys gln thr gly gln thr ser leu ser
 1981/661 2011/671
 GAC CCT GTG CAT CTG ACT GTG CTT TCC GAA TGG CTG GTG CTC CAG ACC CCT CAC CTG GAG
 asp pro val his leu thr val leu ser glu trp leu val leu gln thr pro his leu glu
 2041/681 2071/691
 TTC CAG GAG GGA GAA ACC ATC ATG CTG AGG TGC CAC AGC TGG AAG GAC AAG CCT CTG GTC
 phe gln glu gly glu thr ile met leu arg cys his ser trp lys asp lys pro leu val
 2101/701 2131/711
 AAG GTC ACA TTC TTC CAG AAT GGA AAA TCC CAG AAA TTC TCC CAT TTG GAT CCC ACC TTC
 lys val thr phe phe gln asn gly lys ser gln lys phe ser his leu asp pro thr phe
 2161/721 2191/731
 TCC ATC CCA CAA GCA AAC CAC AGT CAC AGT GGT GAT TAC CAC TGC ACA GGA AAC ATA GGC
 ser ile pro gln ala asn his ser his ser gly asp tyr his cys thr gly asn ile gly
 2221/741 2251/751
 TAC ACG CTG TTC TCA TCC AAG CCT GTG ACC ATC ACT GTC CAA TAG
 tyr thr leu phe ser ser lys pro val thr ile thr val gln AMB

FIGURE 13



19/24

FIGURE 14

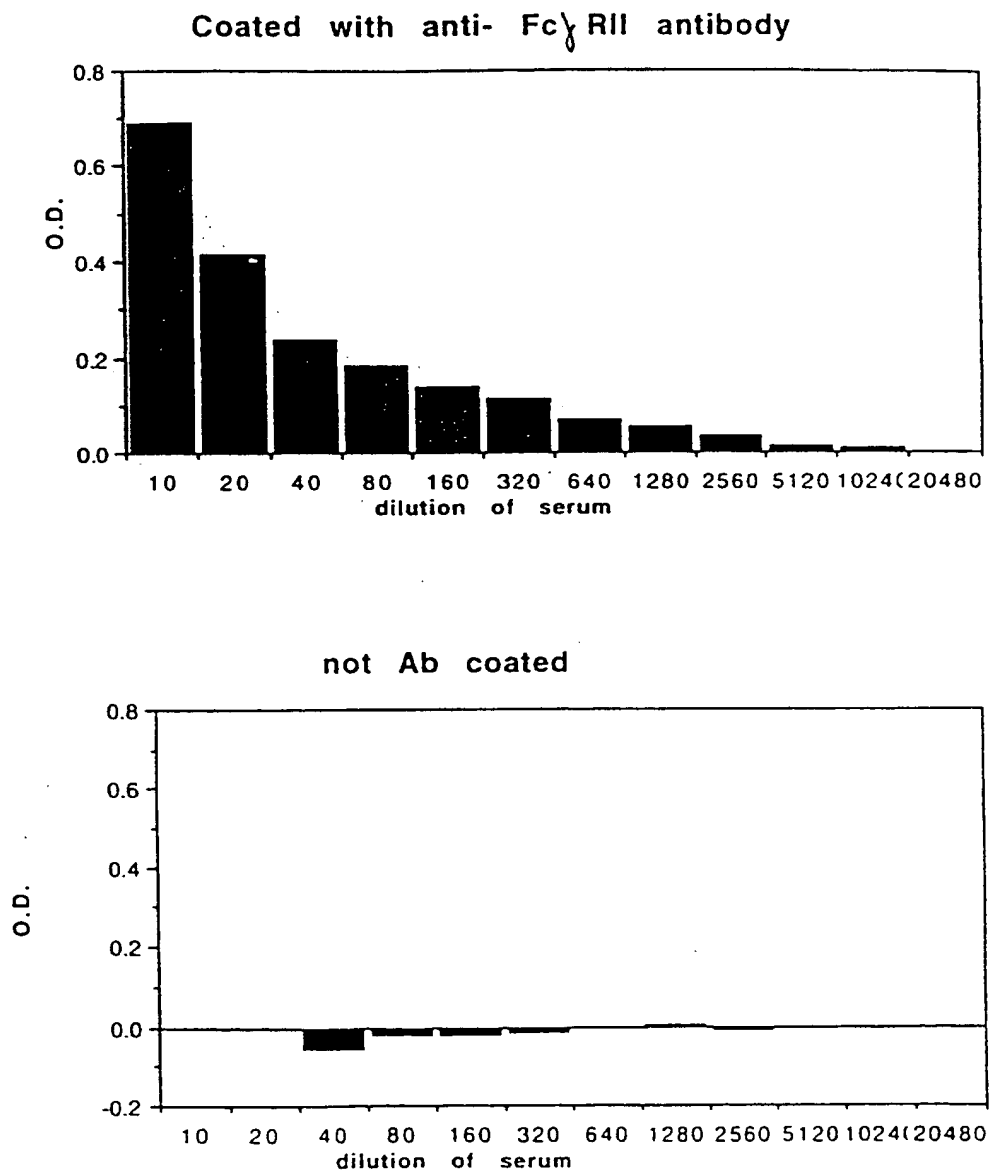


FIGURE 15

20/24

Depletion of Heat aggregated Ig (Hagg) using FcgRII-HSA silica

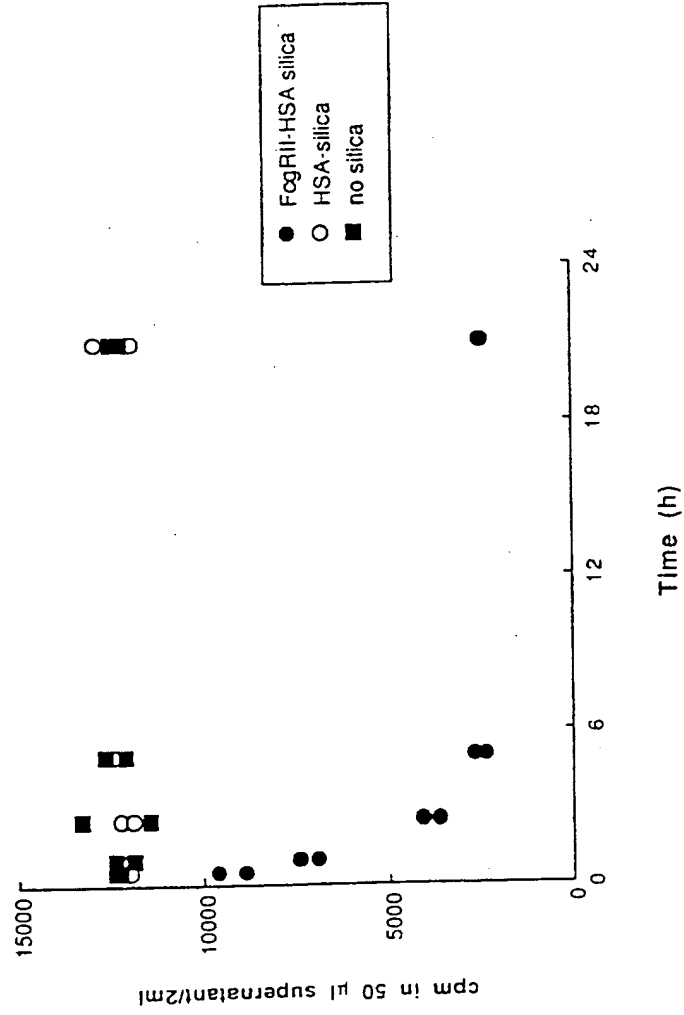


FIGURE 16

No depletion of monomeric Ig using FcγRII-HSA silica

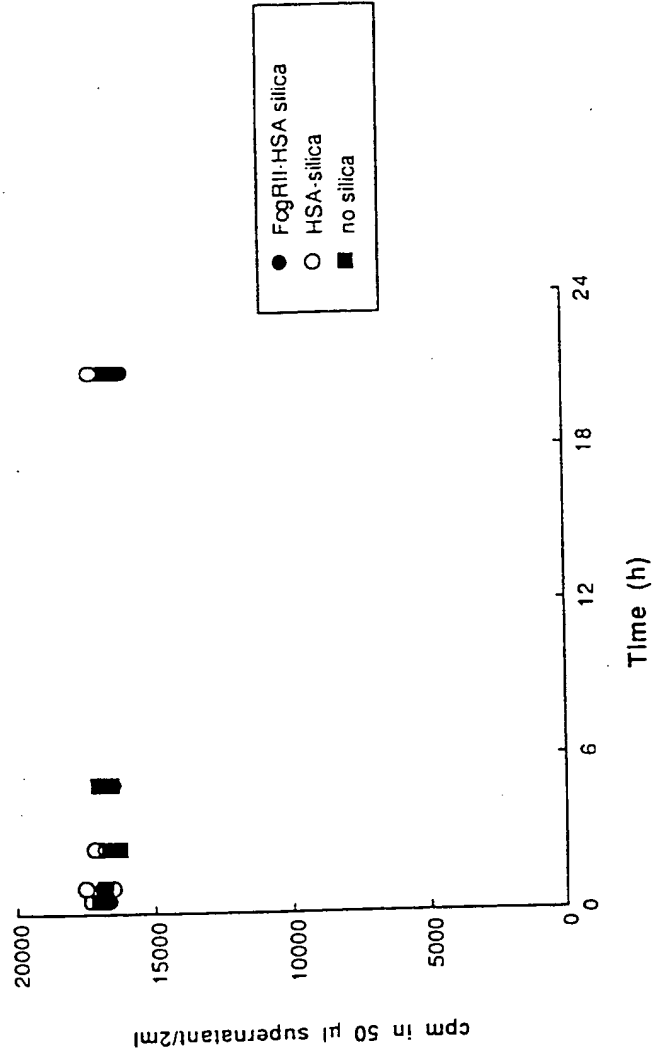


FIGURE 17

Functional soluble FcγRII detected binding to hagg using the MoAb 8.2

Titration of rsFcγRII from various sources

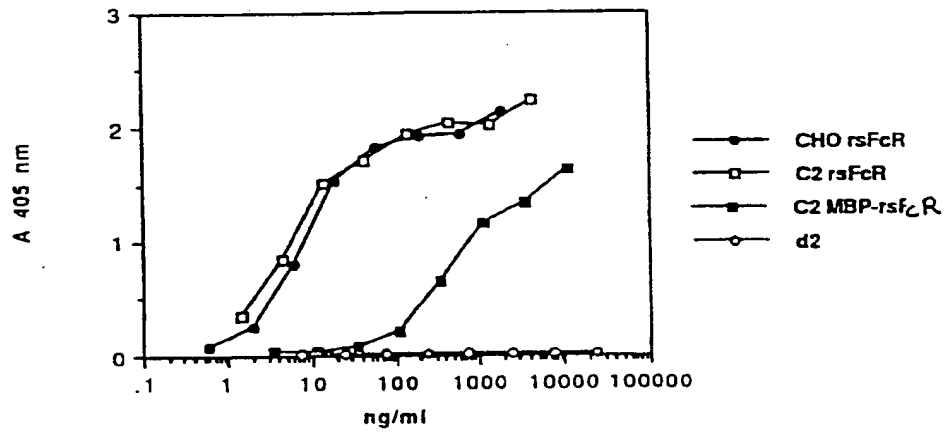


FIGURE 18

Human serum containing rheumatoid factors, but not normal human sera, inhibits the binding of HRP conjugated to rsHSA-FcγRII to hagg.

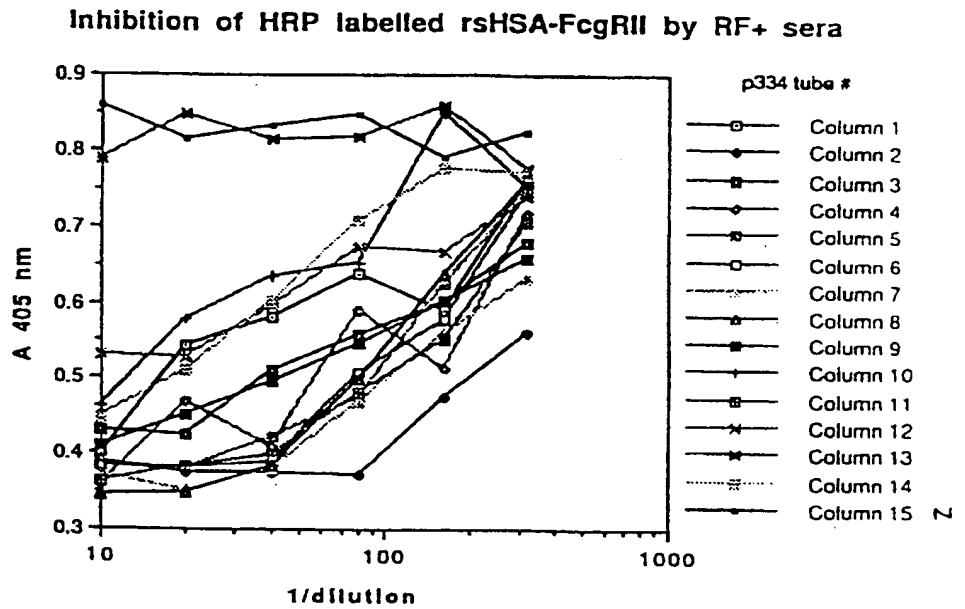


FIGURE 19

Peptoid name	A 405 nm (X 1000)	Peptoid name	A 405 nm (X 1000)
TC,1	308.5	NB,1	578.5
AD,1	317	BD,1	580
DC,1	319	OA,1	582.5
SC,1	319	DJ,1	586
AC,1	320	LG,1	586.5
RC,1	323.5	VF,1	586.5
NC,1	329.5	OG,1	587
UC,1	329.5	DS,1	587
LC,1	330.5	IF,1	588
FC,1	332.5	RA,1	588
JC,1	335	DL,1	589.5
HC,1	343	QB,1	591
QC,1	345.5	QF,1	592
GC,1	346.5	EU,1	592
CU,1	356	JE,1	592
MC,1	357	DQ,1	592.5
EC,1	358	AF,1	594
DG,1	359.5	SB,1	594
IC,1	363	HA,1	594.5
CF,1	363	IG,1	596
CG,1	364	HB,1	596.5
CV,1	364	DO,1	596.5
VC,1	364	RB,1	597
		Background	304
		Maximum	619

INTERNATIONAL SEARCH REPORT

International Application No.
PCT/AU 95/00606

A. CLASSIFICATION OF SUBJECT MATTER		
Int Cl ⁶ : C07K 14/735, 19/00, C12N 15/11, 15/62, C12P 19/34, G01N 33/68, A61K 39/395		
According to International Patent Classification (IPC) or to both national classification and IPC		
B. FIELDS SEARCHED		
Minimum documentation searched (classification system followed by classification symbols) C07K 14/735, 19/00, C12N 15/11, 15/62, C12P 19/34, G01N 33/68, A61K 39/395 (Through Electronic Databases)		
Documentation searched other than minimum documentation to the extent that such documents are included in the fields searched Chemical Abstracts, US Patents (Through Electronic Databases)		
Electronic data base consulted during the international search (name of data base and, where practicable, search terms used) World Patents:Files WPAT, JAPIO, USPM Keywords: {[FC(5N)BIND:](10N)[POLYPEPTIDE# OR PROTEIN#]} OR {FC(W)RECEPTOR:} Chemical Abstracts:File CASM. Keywords: FC() RECEPTOR#; BIND? OR AFFINITY; IMPROV? OR ENHANC?; INCREAS?; 15/CC		
C. DOCUMENTS CONSIDERED TO BE RELEVANT		
Category*	Citation of document, with indication, where appropriate, of the relevant passages	Relevant to claim No.
A	M. D. HULETT et al: "Identification of the IgG Binding Site of the Human Low Affinity Receptor for IgG Fc γRII". J. Biol Chem. Vol. 269, No. 21, pp 15287-15293, 27 May 1994 See abstract; materials and methods; p15289, col. 2, line 20-p15290, col. 1, line 16 and line 20-23; p15292, col. 2, last section and Figure 2.	1-12, 14, 16, 22-24, 31-43, 45-47, 53-64
X	US 4579840 (HAHN) 1 April 1986 See col. 4, lines 10-47; col. 6 lines 62-68; col. 7 lines 25-38 and 48-68; col. 8 lines 60-66; col. 14 lines 66-68; col. 17 lines 25-30 and claims	25-30
<input checked="" type="checkbox"/> Further documents are listed in the continuation of Box C <input checked="" type="checkbox"/> See patent family annex		
* Special categories of cited documents: "A" document defining the general state of the art which is not considered to be of particular relevance "E" earlier document but published on or after the international filing date "L" document which may throw doubts on priority claim(s) or which is cited to establish the publication date of another citation or other special reason (as specified) "O" document referring to an oral disclosure, use, exhibition or other means "P" document published prior to the international filing date but later than the priority date claimed "T" later document published after the international filing date or priority date and not in conflict with the application but cited to understand the principle or theory underlying the invention "X" document of particular relevance; the claimed invention cannot be considered novel or cannot be considered to involve an inventive step when the document is taken alone "Y" document of particular relevance; the claimed invention cannot be considered to involve an inventive step when the document is combined with one or more other such documents, such combination being obvious to a person skilled in the art "&" document member of the same patent family		
Date of the actual completion of the international search 24 November 1995		Date of mailing of the international search report 8 DECEMBER 1995
Name and mailing address of the ISA/AU AUSTRALIAN INDUSTRIAL PROPERTY ORGANISATION PO BOX 200 WODEN ACT 2606 AUSTRALIA Facsimile No.: (06) 285 3929		Authorized officer ROBYN PORTER Telephone No.: (06) 283 2318

INTERNATIONAL SEARCH REPORT

International Application No.
PCT/AU 95/00606

C (Continuation) DOCUMENTS CONSIDERED TO BE RELEVANT		
Category*	Citation of document, with indication, where appropriate, of the relevant passages	Relevant to claim No.
X	US 4752571 (BERGLUND & INGANAS), 21 June 1988. See entire specification especially col. 1 lines 6-10 and claims.	25-28
X	US 5084398 (HUSTON et al) 28 January 1992 See abstract; col. 10 line 16 - col. 12 line 52; claims	60-62
P,X	WO 94/29351 (CELLTECH LIMITED) 22 December 1994 See entire application	1
A	WO 87/07277 (THE UNIVERSITY OF MELBOURNE) 3 December 1987	
A	M. L. HIBBS et al: "Membrane-Proximal Ig-like Domain of Fcγ RIII (CD16) Contains Residues Critical for Ligand Binding". J. Immunol. vol. 152, pp4466-4474, 1994.	

INTERNATIONAL SEARCH REPORT

International Application No.
PCT/AU 95/00606

This Annex lists the known "A" publication level patent family members relating to the patent documents cited in the above-mentioned international search report. The Australian Patent Office is in no way liable for these particulars which are merely given for the purpose of information.

Patent Document Cited in Search Report		Patent Family Member			
US	4579840	US	4752601	US	4753927
US	4752571	CA	1265999	EP	213093
		SE	8502722	JP	62012859
US	5084398	AU	27943/89	EP	343227
				WO	8904675
WO	9429351	AU	69341/94	AU	69342/94
				WO	9429451
WO	8707277	AU	74881/87	EP	268636
		US	5451669	NZ	220504
END OF ANNEX					

**This Page is Inserted by IFW Indexing and Scanning
Operations and is not part of the Official Record**

BEST AVAILABLE IMAGES

Defective images within this document are accurate representations of the original documents submitted by the applicant.

Defects in the images include but are not limited to the items checked:

- BLACK BORDERS
- IMAGE CUT OFF AT TOP, BOTTOM OR SIDES
- FADED TEXT OR DRAWING
- BLURRED OR ILLEGIBLE TEXT OR DRAWING
- SKEWED/SLANTED IMAGES
- COLOR OR BLACK AND WHITE PHOTOGRAPHS
- GRAY SCALE DOCUMENTS
- LINES OR MARKS ON ORIGINAL DOCUMENT
- REFERENCE(S) OR EXHIBIT(S) SUBMITTED ARE POOR QUALITY
- OTHER: _____

IMAGES ARE BEST AVAILABLE COPY.

As rescanning these documents will not correct the image problems checked, please do not report these problems to the IFW Image Problem Mailbox.